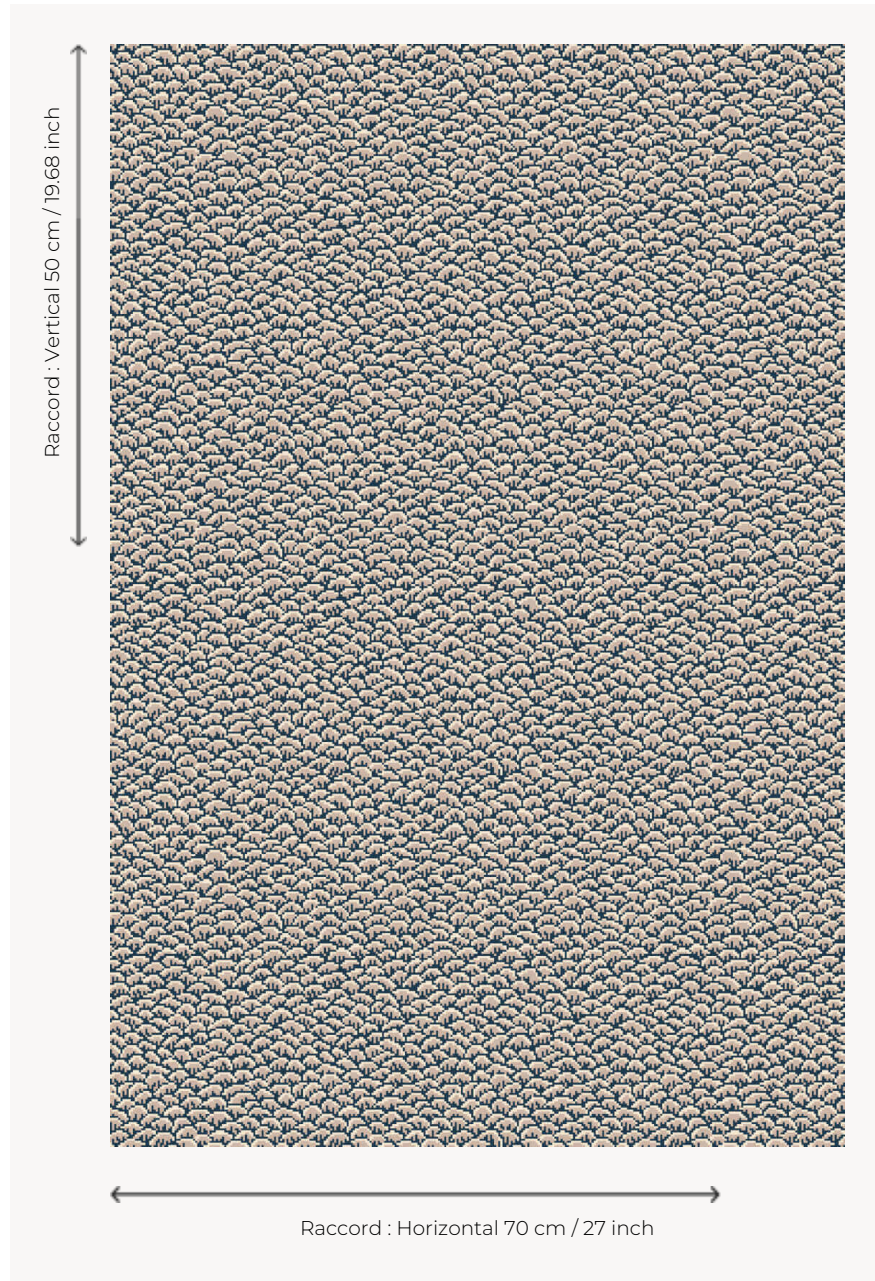


# BT103001 ECAILLES

Worked in traditional Wilton weaving, this timeless scale pattern can be found in 18th century Indian palempores as well as in traditional Japanese art.

## BT103001 - Marine



## Braquenié

PERFORMANCE	NON FEU
FAMILY	Carpet
TECHNIQUE	Woven Wilton
USE	Moderate traffic Stairs
COMPOSITION	20 % Polyamide
PILE	Cut pile
ASPECT	Mat
REPEAT	H: 70 cm - 27,00 inch V: 50 cm - 19,68 inch Straight repeat
NUMBER OF COLORS	3
PILE HEIGHT	5.40 mm 0.21 inch
TOTAL HEIGHT	8.00 mm 0.31 inch
TOTAL WEIGHT	7.47 oz/ft <sup>2</sup>
CERTIFICATIONS	Passé
NOTES	Fire retardant
INFORMATION	Production tolerance +/- 3 to 5% Natural irregularities Natural peeling No sampling

1 Colors



BT103001

Marine