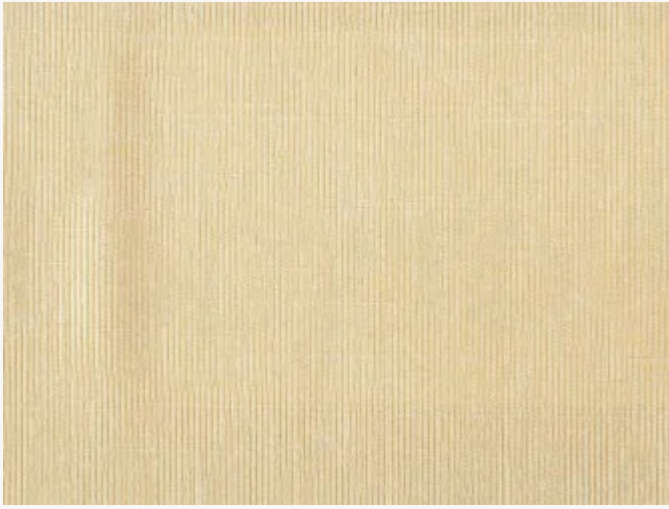


F2230212 MOIRE PRINCESSE II

The moire, classic and elegant material par excellence, is the result of crushing a wet and folded fabric by calendering. The crushed weft is slightly altered and gives an undulating effect by reflection of light on the crushed sides. Several effects are possible depending on how the fabric is folded.

F2230212 - Raphia

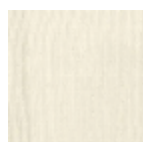


Laize : 145,00 cm / 57,08 inch

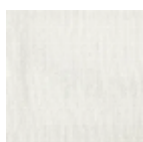
Pierre Frey

TYPE	Plains
COMPOSITION	41 % Cotton - 27 % Linen - 18 % Viscose - 14 % Polyester
SALES UNIT	Available per meter/yard
WIDTH	145 cm / 57,08 inch
WEIGHT	379 gr / ml
CARE	
NOTES	Can be embossed

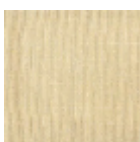
4 Colors



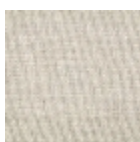
F2230005
Crème



F2230033
Écru



F2230212
Raphia



F2230264
Belette