

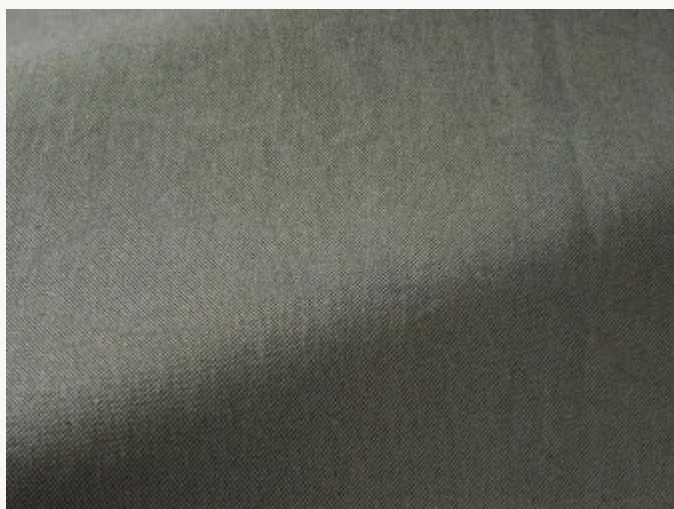


F3442015 GOLFE

Magnificent two-tone linen canvas with an irresistibly soft hand and generous weight. As the color of the warp subtly contrasts with the one of its weft, this semi-plain presents a micro-checkerboard.

With its vintage and authentic look and its high-performance properties, GOLFE combines the beauty of a natural fiber woven in Pierre Frey's workshop (labelled Living Heritage Mill), with pigmented color and treatment that achieves the best outdoor performance (high lightfastness, water-repellent treatment for high resistance of colors to the elements and mold resistance).

F3442015 - Sarrasin



Laize : 150,00 cm / 59,05 inch

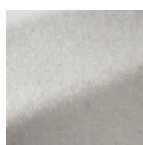
Pierre Frey

PERFORMANCE	Outdoor
TYPE	Plains
USE	Normal use
MARTINDALE	25.000 T
COMPOSITION	100 % Linen
SALES UNIT	Available per meter/yard
WIDTH	150 cm / 59,05 inch
WEIGHT	750 gr / ml
CARE	
CERTIFICATIONS	EN1021-1-2 in conjunction with suitable combustion modified foam NFPA 260-Class 1
NOTES	High lightfastness, mold-resistant, stain & water repellent Woven in Pierre Frey's workshop in northern France.Living Heritage Mill.
INFORMATION	Shrinkage >3% if washed The flakes of the linen fiber are part of the authentic character and look of the fabric. Natural fiber irregularity Reinforced stitching recommended to avoid fraying at seams For outdoor use, make sure to use appropriate lining materials. Remember to store pads and cushions in a clean, dry place when not in use.
BOOK	F9979202004 F9979202004MINI

25 Colors



F3442001
Blanc



F3442002
Flocon



F3442003
Ecume



F3442004
Galet



F3442005
Bouleau



F3442006
Amanite



F3442007
Raisin



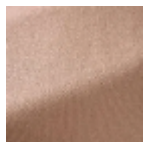
F3442008
Brique



F3442009
Sanguine



F3442010
Tuile



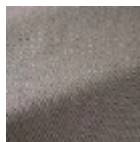
F3442011
Etrusque



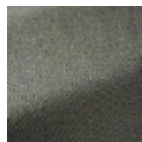
F3442012
Gabardine



F3442013
Poivre



F3442014
Tourterelle



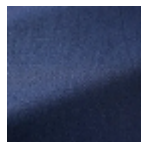
F3442015
Sarrasin



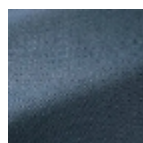
F3442016
Cendres



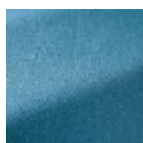
F3442017
Pigeon



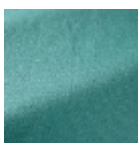
F3442018
Denim



F3442019
Orage



F3442020
Azur



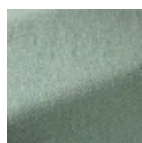
F3442021
Menthe



F3442022
Nuage



F3442023
Sauge



F3442024
Amande



F3442025
Camomille