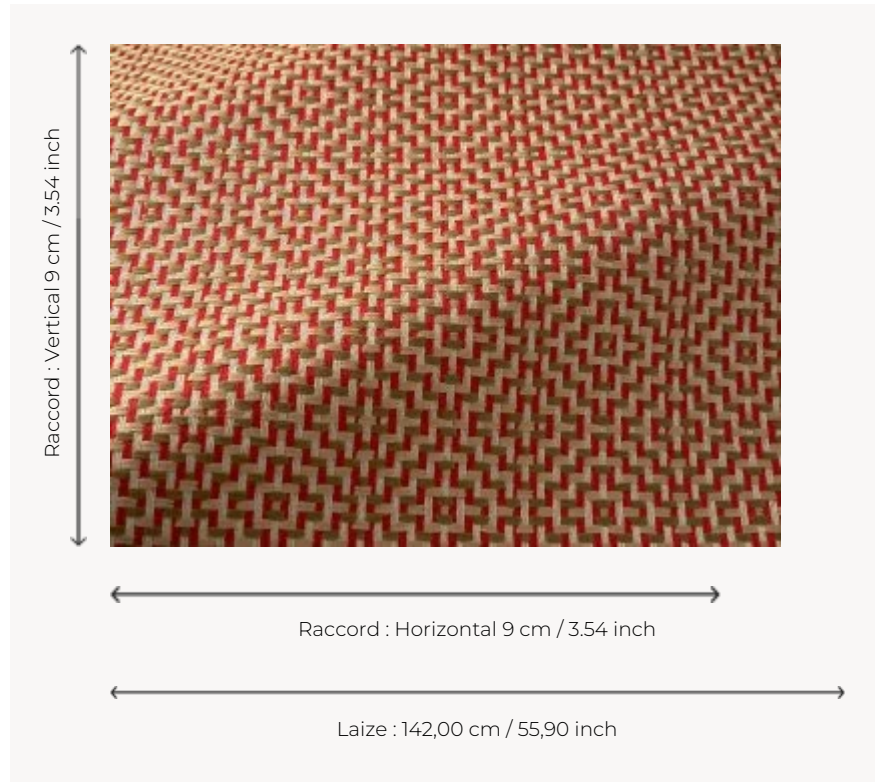


# F3821003 ELBE

High-performance In-Outdoor fabric, ELBE reinterprets traditional basketry in a colourful, timeless spirit. Inspired by kinetic art, it is woven in Pierre Frey's EPV-certified workshops in the north of France, experts in Europe in the weaving of lightfast, stain-resistant textiles.

## F3821003 - Erable



## Pierre Frey

<b>PERFORMANCE</b>	Outdoor
<b>TYPE</b>	Jacquards
<b>USE</b>	Moderate use
<b>MARTINDALE</b>	< 20.000 T
<b>COMPOSITION</b>	100 % Acrylic
<b>SALES UNIT</b>	Available per meter/yard
<b>WIDTH</b>	142 cm / 55,90 inch
<b>REPEAT</b>	H: 9 cm - 3,54 inch V: 9 cm - 3,54 inch Straight repeat
<b>WEIGHT</b>	624 gr / ml
<b>CARE</b>	
<b>CERTIFICATIONS</b>	NFPA 260-Class 1 CAL TB 117- Pass
<b>NOTES</b>	<p>High lightfastness, mold-resistant, stain &amp; water repellent</p> <p>Washable fabric</p> <p>Made in France (EPV Living Heritage Mill)</p> <p>Indoor-Outdoor fabric</p> <p>Woven in Pierre Frey's workshop in northern France. Living Heritage Mill.</p>
<b>INFORMATION</b>	<p>Reinforced stitching recommended to avoid fraying at seams</p> <p>For outdoor use, make sure to use appropriate lining materials.</p> <p>Remember to store pads and cushions in a clean, dry place when not in use.</p>
<b>BOOK</b>	F9979202305

3 Colors



F3821001  
Tilleul



F3821002  
Chataigne



F3821003  
Erable