

I6613001 SYLVANA

With its sublime Genoa velvet that evokes a 17th century Persian garden, SYLVANA depicts earthly paradise with its delicately woven flowers. This fabric is freely inspired by a 19th century gouache painting in the Orientalized style that was fashionable at the time, which is preserved in the Maison's collection of archives.






I6613001 - Nero



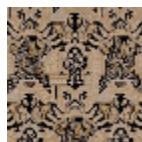
Raccord : Horizontal 64 cm / 25.19 inch

Laize : 129,00 cm / 50,78 inch

Fadini Borghi

TYPE	-
USE	Moderate use
MARTINDALE	< 10.000 T
COMPOSITION	71 % Cotton - 29 % Cupro
SALES UNIT	Available per meter/yard
WIDTH	129 cm / 50,78 inch
REPEAT	H: 64 cm - 25,19 inch V: 114 cm - 44,88 inch Straight repeat
WEIGHT	412 gr / ml
CARE	    
INFORMATION	pile 100% bemberg

2 Colors



I6613001
Nero



I6613002
Rosso