

## I6613002 SYLVANA

With its sublime Genoa velvet that evokes a 17th century Persian garden, SYLVANA depicts earthly paradise with its delicately woven flowers. This fabric is freely inspired by a 19th century gouache painting in the Orientalized style that was fashionable at the time, which is preserved in the Maison's collection of archives.

### I6613002 - Rosso



Raccord : Vertical 114 cm / 44,88 inch

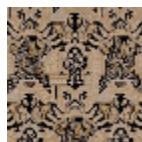
Raccord : Horizontal 64 cm / 25,19 inch

Laize : 129,00 cm / 50,78 inch

### Fadini Borghi

TYPE	-
USE	Moderate use
MARTINDALE	< 10.000 T
COMPOSITION	71 % Cotton - 29 % Cupro
SALES UNIT	Available per meter/yard
WIDTH	129 cm / 50,78 inch
REPEAT	H: 64 cm - 25,19 inch V: 114 cm - 44,88 inch Straight repeat
WEIGHT	412 gr / ml
CARE	
INFORMATION	pile 100% bemberg

## 2 Colors



I6613001  
Nero



I6613002  
Rosso