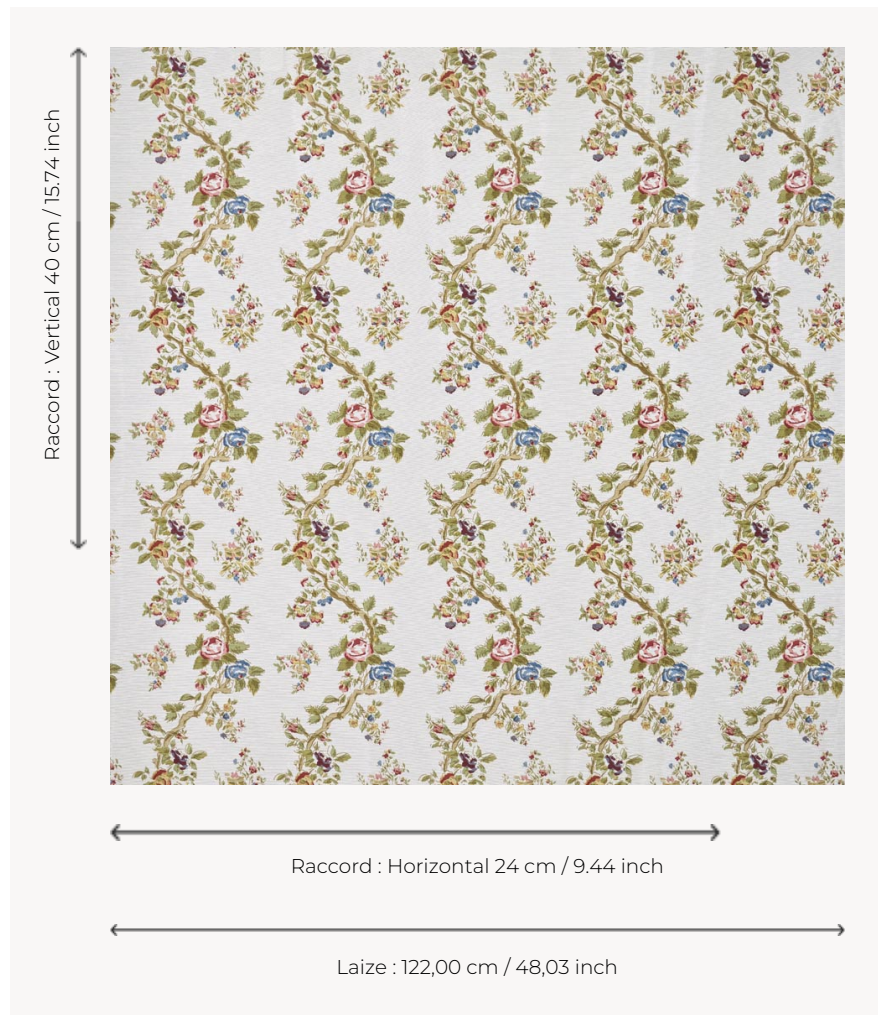



## T0069001 GERMAINE

This undulating, flowering branch reproduces the charm of traditional woodblock prints.

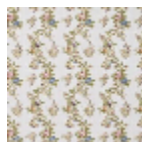
### T0069001 - Matcha



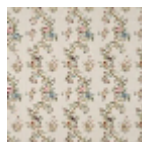
### Thorp of London

<b>TYPE</b>	Prints
<b>TECHNIQUE</b>	Screen printed by hand
<b>SALES UNIT</b>	Available per meter/yard
<b>GROUND</b>	TS016 - Marigold White
<b>COMPOSITION</b>	41 % Cotton - 27 % Linen - 18 % Bamboo viscose - 14 % Polyamide
<b>NUMBER OF COLORS</b>	9
<b>COLORS</b>	A-SAND 216 B-MOSAIC 208 C-BERLINGOT 21 D-MATCHA 111 E-ADRIATIC 284 F-STRAWBERRY 180 G-CHESTNUT 118 H-CORN 185 I-WICKER 240
<b>DESIGN WIDTH</b>	122 cm / 48,03 inch
<b>REPEAT</b>	H: 24 cm - 9,44 inch V: 40 cm - 15,74 inch Straight repeat
<b>WEIGHT</b>	377 gr / ml
<b>CARE</b>	
<b>INFORMATION</b>	Hand screen printed

## 2 Colors



T0069001  
Matcha



T0069002  
Medici