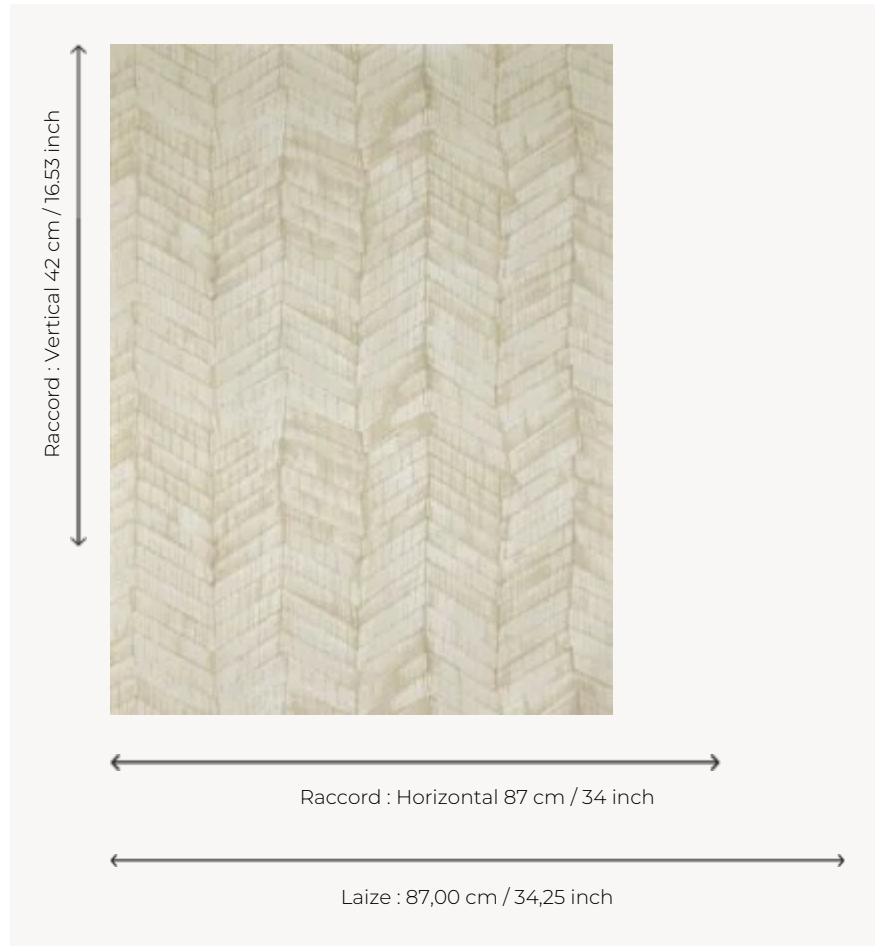



FP022001 PRIAM

Beautiful digital printing on silk thread laminated on non-woven backing. The design, combined with the vertical texture of the backing, evokes an old parquet floor in a contemporary way. The elegant, natural sheen of the silk makes it a truly unique wallpaper.

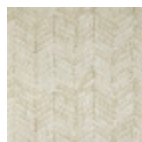
FP022001 - Sable



Pierre Frey

| | |
|-------------------------|--|
| TYPE | End-on-end threads - Printed wallpapers |
| SALES UNIT | Available per meter/yard |
| BACKING | NON WOVEN |
| COMPOSITION | 100 % Silk |
| WIDTH | 87 cm / 34,25 inch |
| REPEAT | H: 87 cm - 34,00 inch V: 42 cm - 16,53 inch Half drop repeat |
| WEIGHT | 230 gr / m ² |
| CARE |  |
| TRIMMING | Trimmed |
| HANGING/REMOVING | Paste the wall Dry strippable |
| CERTIFICATIONS | EUROCLASS C-sI,d0 ASTM E84 Class A |
| INFORMATION | Panel effect Inherent irregularities from the natural fiber |
| BOOK | F9979PPFREY43 |

1 Colors



FP022001
Sable