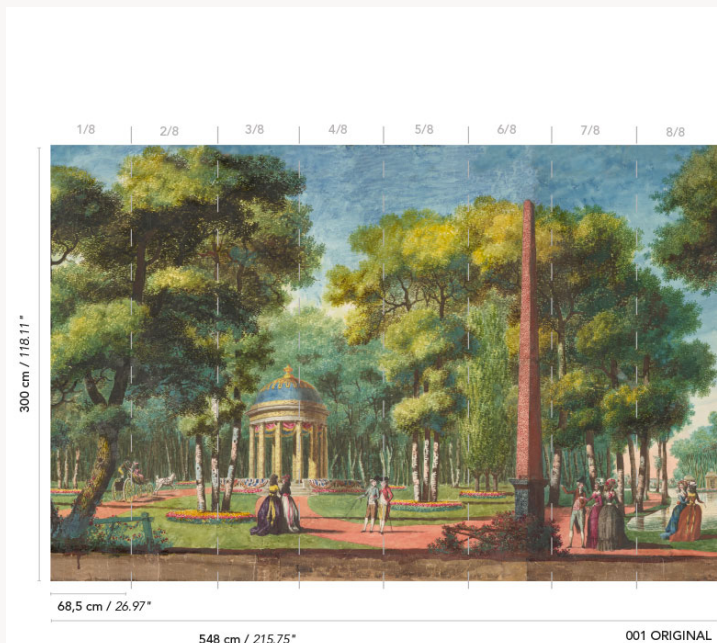


FP610001 SCENES GALANTES

A reproduction of a section of the 18th century transparent masterpiece "Promenade au parc" by French painter, engraver and landscape architect Louis de Carmontelle. Carmontelle's transparent pieces consist of a long roll of hand-painted slides, glued end to end. Illuminated by transparency, scrolling through the work gives the viewer the impression of moving through the landscape. This widescreen panoramic shows gallant scenes, an obelisk and the temple of love, and is printed on matte non-woven backing. It is available in an unpopulated version (FP609 LE PARC). The original work is preserved in the Louvre (© RMN).

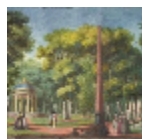
FP610001 - Original



Pierre Frey

TYPE	Small width printed wallpapers - Panoramic wallpapers
SALES UNIT	Full panoramic 300 cm x 544 cm (8 lengths 68 cm x 544 cm) - 118,11 in x 214,17 in (8 lengths 26,77 in x 214,17 in)
BACKING	NON WOVEN
COMPOSITION	-
WIDTH	68 cm / 26,77 inch
REPEAT	H: 544 cm - 214,00 inch V: 300 cm - 118,11 inch Straight repeat
WEIGHT	147 gr / m ²
CARE	
TRIMMING	Trimmed
HANGING/REMOVING	Paste the wall Wet removable
CERTIFICATIONS	EUROCLASS B-s1,d0 ASTM E84 Class A
NOTES	Flame retardant backing Sold as a complete artwork
INFORMATION	2 rolls = 8 panels

1 Colors



FP610001
Original