


FP618001 SHEHERAZADE

With floral arabesques, like a jewel carried by the storyteller of a Thousand and One Nights, this wallpaper reproduces a gouache from the second half of the 19th century, preserved in the archives of the Maison Pierre Frey. Traditional surface printing gives it a hand-painted look, highlighting every detail of the design.

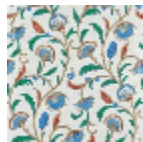
FP618001 - Iznik



Pierre Frey

TYPE	Small width printed wallpapers
SALES UNIT	Available per roll of 10,05 m / 11 yards
BACKING	NON WOVEN
COMPOSITION	-
WIDTH	52 cm / 20,47 inch
REPEAT	H: 52 cm - 20,00 inch V: 53 cm - 20,86 inch Straight repeat
WEIGHT	175 gr / m ²
CARE	
TRIMMING	Trimmed
HANGING/REMOVING	Paste the wall Strippable
CERTIFICATIONS	EUROCLASS B-s1,d0 ASTM E84 Class A
NOTES	Good lightfastness Flame retardant backing Traditional printing technique

5 Colors



FP618001
Iznik



FP618002
Emeraude



FP618003
Soleil



FP618004
Roseindien



FP618005
Bisque