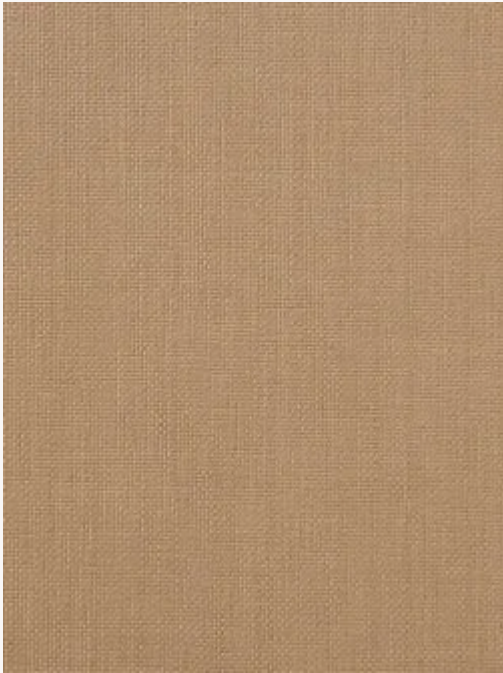




FP865004 MARIUS


Laminated on non-woven, MARIUS is a beautiful plain raffia inspired by the traditional straw mats of southern France. Its satin finish and lacquer sheen bring a modernity to its sophisticated and delicate color range.

FP865004 - Sable

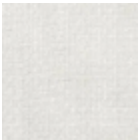


Laize : 128,00 cm / 50,39 inch

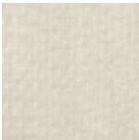
Pierre Frey

TYPE	Plains & semi plains - Paperbacked fabrics
SALES UNIT	Available per meter/yard
BACKING	NON WOVEN
COMPOSITION	57 % Polyamide - 43 % Cotton
WIDTH	128 cm / 50,39 inch
WEIGHT	390 gr / m ²
CARE	
TRIMMING	Trimmed
HANGING/REMOVING	Paste the wall Dry strippable
BOOK	F9979PPFREY34

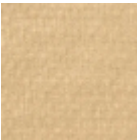
10 Colors



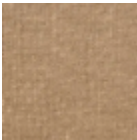
FP865001
Nacre



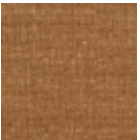
FP865002
Chaux



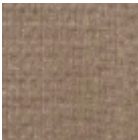
FP865003
Osier



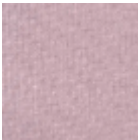
FP865004
Sable



FP865005
Savane



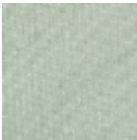
FP865006
Ecorce



FP865008
Ballerine



FP865009
Aquatique



FP865010
Amande



FP865011
Mastic