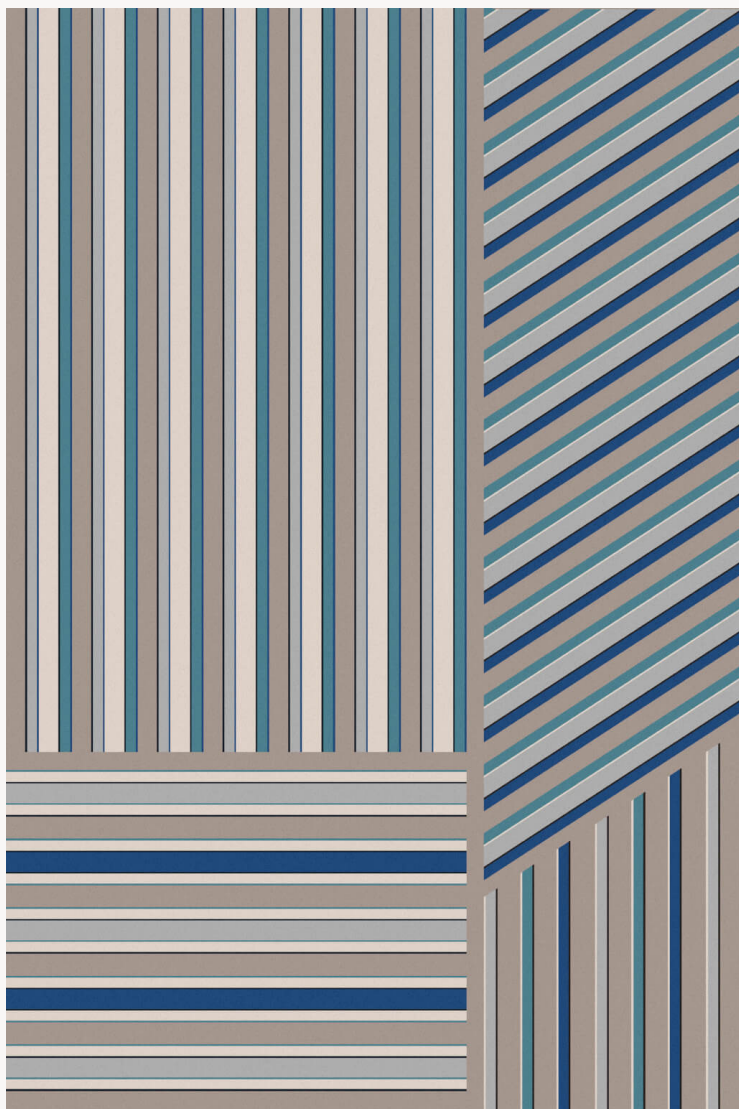


BT109001 GAMA

GAMA is a rhythm of different stripes inspired by 18th century linings. This graphic set plays with materials through a mixture of worsted and semi-worsted wool, and natural silk.

BT109001 - Saphir



Laize : ,00 cm / ,00 inch

Braquenié

FAMILY	Carpet Rug
TECHNIQUE	Hand-tuft
USE	Moderate traffic
COMPOSITION	36 % Wool 250Tex - 29 % Dull Silk - 18 % Wool 100Tex - 17 % Wool 380Tex
DENSITY	88
PILE	Cut pile Loop pile
ASPECT	Shiny - Mat - Textured - Carved
NUMBER OF COLORS	6
PILE HEIGHT	12,00 mm, 9,00 mm, 7,00 mm 0,28 inch, 0,47 inch, 0,35 inch
TOTAL HEIGHT	15,00 mm 0,59 inch
TOTAL WEIGHT	18,71 oz/ft ²
CERTIFICATIONS	Non testé
NOTES	100% handmade 100% natural fiber
INFORMATION	Production tolerance +/- 3 to 5% Natural irregularities Natural peeling

2 Colors



BT109001
Saphir



BT109002
Ocre jaune