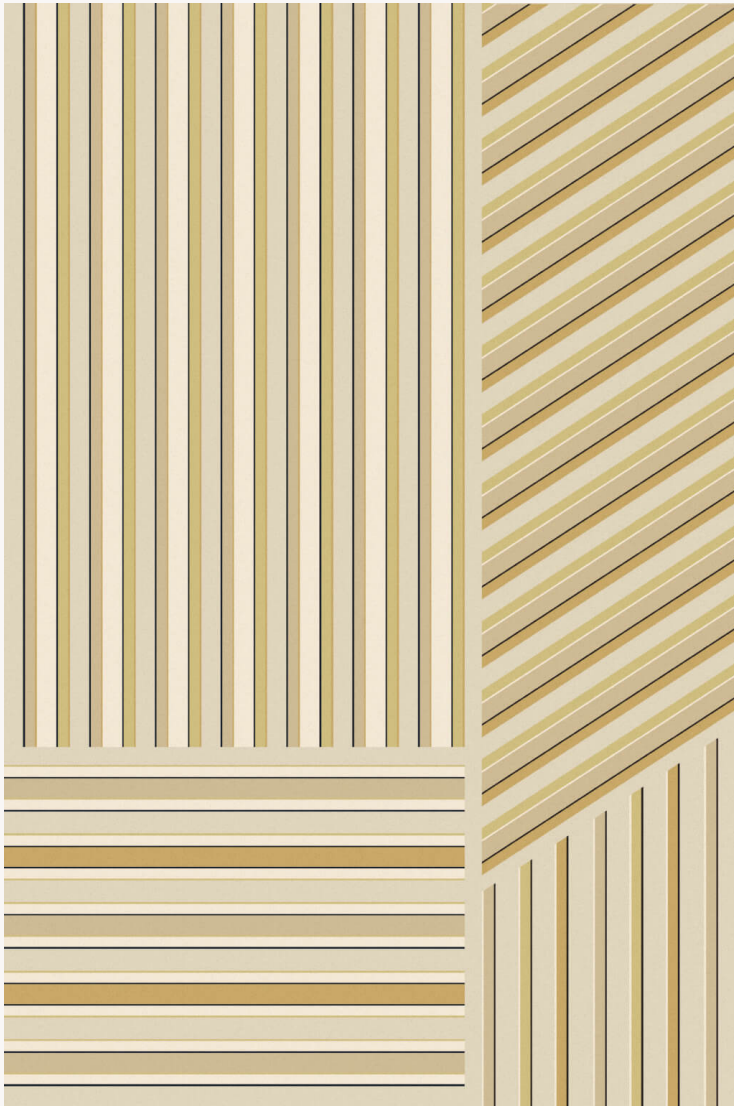


## BT109002 GAMA

GAMA is a rhythm of different stripes inspired by 18th century linings. This graphic set plays with materials through a mixture of worsted and semi-worsted wool, and natural silk.

### BT109002 - Ocre jaune



Laize : ,00 cm / ,00 inch

### Braquenié

<b>FAMILY</b>	Carpet Rug
<b>TECHNIQUE</b>	Hand-tuft
<b>USE</b>	Moderate traffic
<b>COMPOSITION</b>	36 % Wool 250Tex - 29 % Dull Silk - 18 % Wool 100Tex - 17 % Wool 380Tex
<b>DENSITY</b>	88
<b>PILE</b>	Cut pile Loop pile
<b>ASPECT</b>	Shiny - Mat - Textured - Carved
<b>NUMBER OF COLORS</b>	6
<b>PILE HEIGHT</b>	12,00 mm, 9,00 mm, 7,00 mm 0,28 inch, 0,47 inch, 0,35 inch
<b>TOTAL HEIGHT</b>	15,00 mm 0,59 inch
<b>TOTAL WEIGHT</b>	18,71 oz/ft <sup>2</sup>
<b>CERTIFICATIONS</b>	Non testé
<b>NOTES</b>	100% handmade 100% natural fiber
<b>INFORMATION</b>	Production tolerance +/- 3 to 5% Natural irregularities Natural peeling

## 2 Colors



BT109001  
Saphir



BT109002  
Ocre jaune