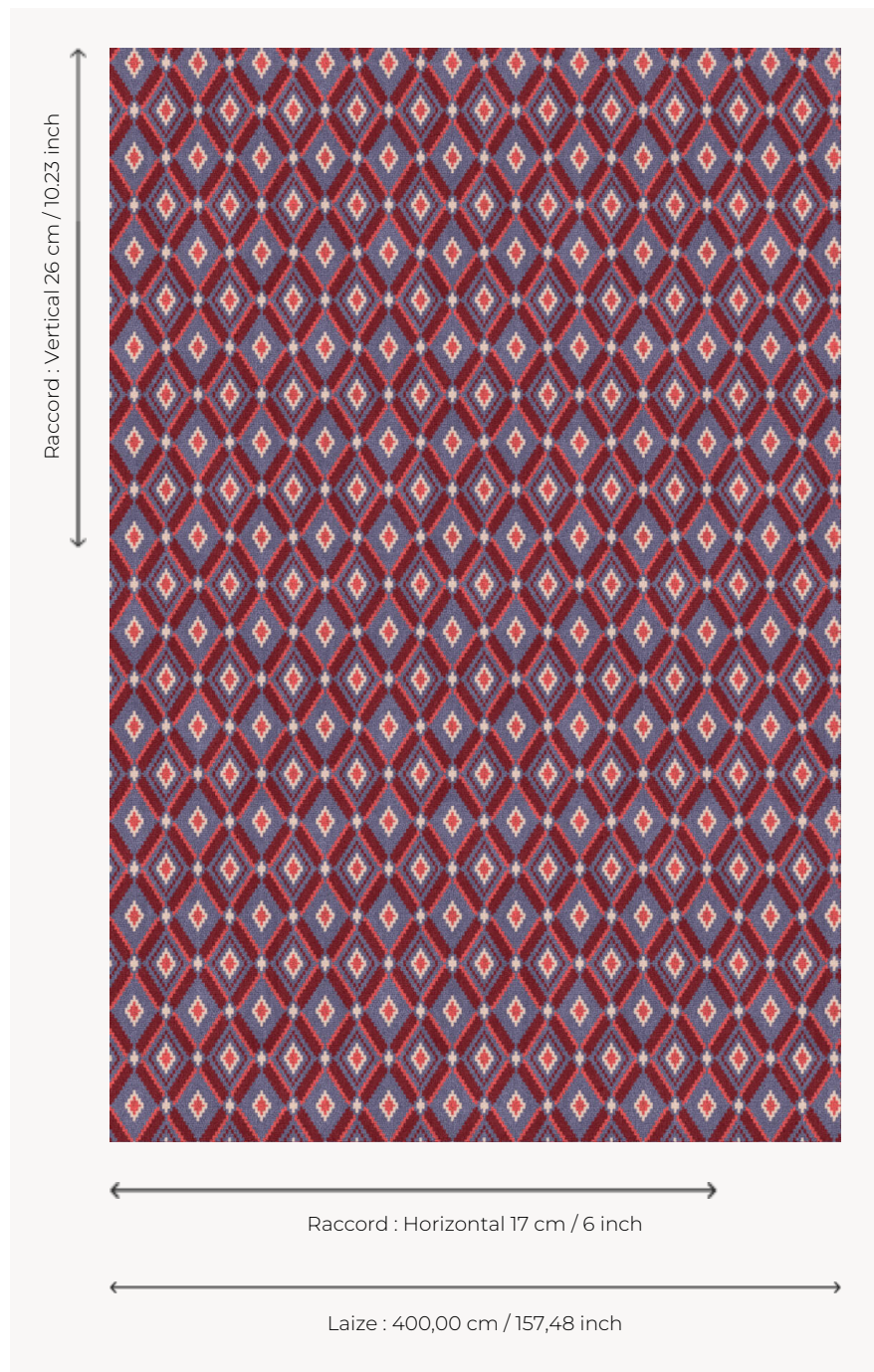


BT116002 ARISTOTE

Decorative geometric diamonds evoke the fashionable motifs of the late 18th century. This graphic carpet has a matching epingle velvet fabric under the reference B7641.

BT116002 - Grenat



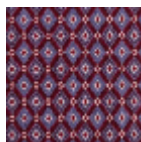
Braquenié

PERFORMANCE	TRAFIC INTENSE - NON FEU
FAMILY	Carpet
TECHNIQUE	Woven Axminster
USE	Intensive traffic
COMPOSITION	80 % Wool - 20 % Polyamide
DENSITY	7x10
PILE	Cut pile
ASPECT	Mat
WIDTH	400 cm / 157,48 inch
REPEAT	H: 17 cm - 6,00 inch V: 26 cm - 10,23 inch Straight repeat
NUMBER OF COLORS	4
PILE HEIGHT	7.30 mm 0.29 inch
TOTAL HEIGHT	10.00 mm 0.39 inch
TOTAL WEIGHT	7.06 oz/ft ²
CERTIFICATIONS	Passé
NOTES	Fire retardant Heavy traffic Large width
INFORMATION	Production tolerance +/- 3 to 5% Natural peeling

3 Colors



BT116001
Mistral



BT116002
Grenat



BT116003
Chataigne