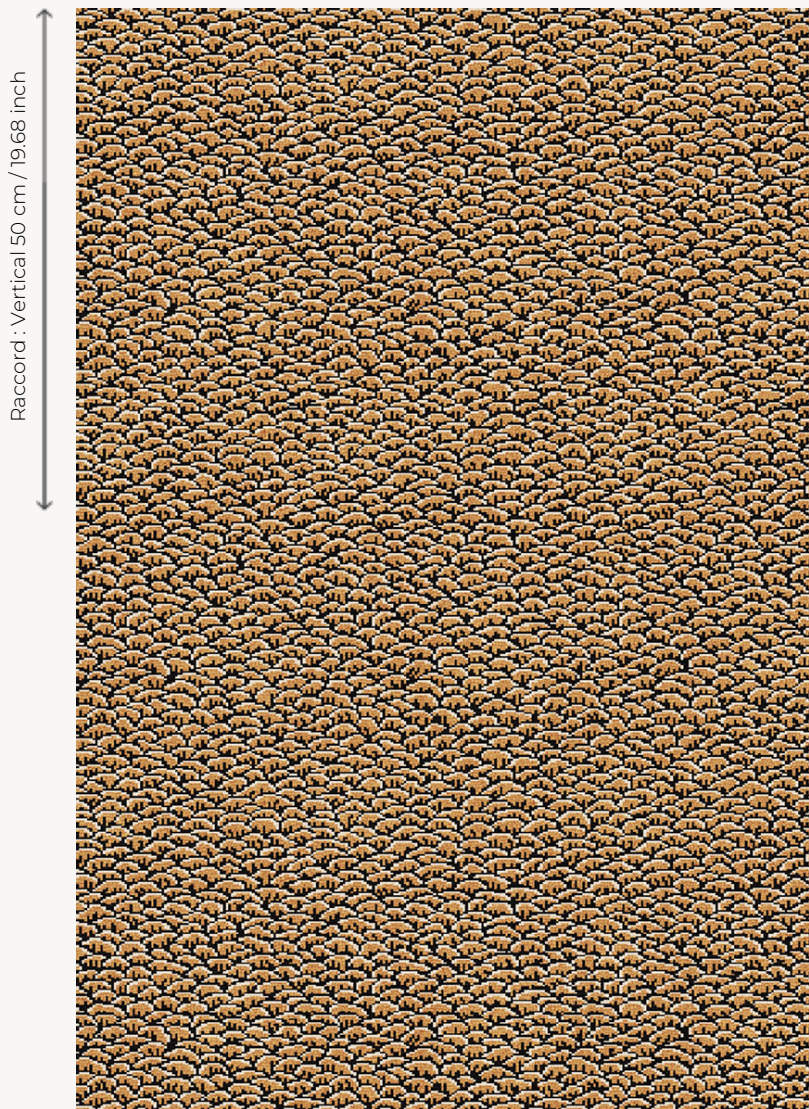


BT129003 ECAILLES AXMINSTER

Worked in Axminster weaving, this timeless scale pattern can be found both in the mounds of 18th century Indian palempores and in traditional Japanese art.

BT129003 - Noir/gold



Raccord : Vertical 50 cm / 19,68 inch

Raccord : Horizontal 100 cm / 39 inch

Laize : ,00 cm / ,00 inch

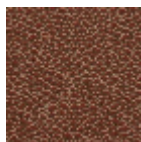
Braquenié

PERFORMANCE	TRAFIC INTENSE - NON FEU
FAMILY	Carpet
TECHNIQUE	Fast-Track woven Axminster
USE	Intensive traffic
COMPOSITION	80 % Wool - 20 % Polyamide
DENSITY	7x10
PILE	Cut pile
ASPECT	Mat
REPEAT	H: 100 cm - 39,00 inch V: 50 cm - 19,68 inch Straight repeat
NUMBER OF COLORS	3
PILE HEIGHT	7.40 mm 0.29 inch
TOTAL HEIGHT	10.10 mm 0.39 inch
TOTAL WEIGHT	7.18 oz/ft ²
CERTIFICATIONS	Passé
NOTES	Fire retardant Heavy traffic Large width
INFORMATION	Production tolerance +/- 3 to 5% Natural peeling

3 Colors



BT129001
MARINE



BT129002
COGNAC



BT129003
Noir/gold