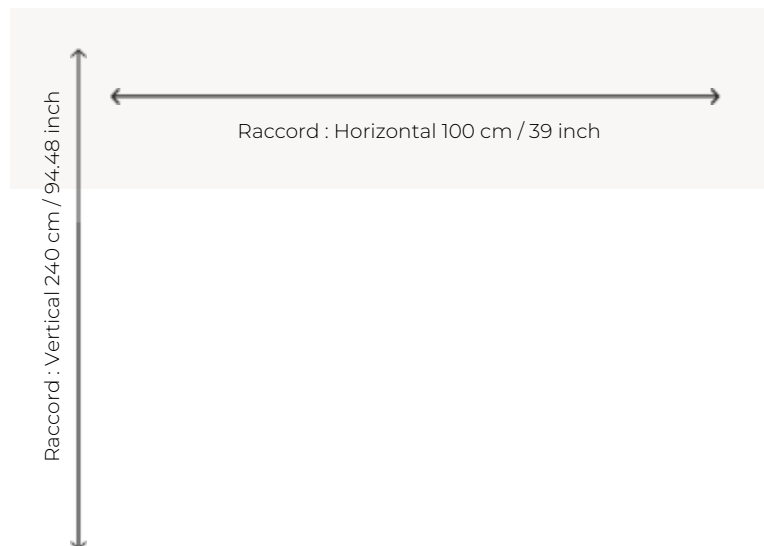


## BT147\_FT\_0011 TIBERE

TIBERE is the contemporary interpretation of an ancient tapestry, used on the floor as an Axminster carpet. Worked in two colors, it deploys an impressive vegetal universe under a brand new angle.

### BT147\_FT\_0011 -



### Braquenié

**PERFORMANCE** TRAFIC INTENSE - NON FEU

**FAMILY** Carpet

**TECHNIQUE** Fast-Track woven Axminster

**USE** Intensive traffic

**COMPOSITION** 80 % Wool - 20 % Polyamide

**DENSITY** 7x10

**PILE** Cut pile

**ASPECT** Mat

**REPEAT** H: 100 cm - 39,00 inch  
V: 240 cm - 94,48 inch  
Straight repeat

**NUMBER OF COLORS** 7

**PILE HEIGHT** 7.40 mm  
0.29 inch

**TOTAL HEIGHT** 10.10 mm  
0.39 inch

**TOTAL WEIGHT** 7.18 oz/ft<sup>2</sup>

**NOTES** Fire retardant  
Heavy traffic  
Large width

**INFORMATION** Production tolerance +/- 3 to 5%  
Natural irregularities  
Natural peeling

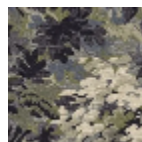
## 5 Colors

BT147\_AX\_000

4

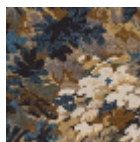
BT147\_AX\_001

BT147\_FT\_0011



BT147001

Forêt



BT147002

Ocre