

## FT114001 SAMARAI

SAMARAI has an all-over pattern of concentric circles suggestive of Aboriginal sand and rock paintings, a recurring theme in Aboriginal art. Hand-tufted, it plays with a background of New Zealand wool loops and lines of wool cut pile, as if sculpted in relief.

### FT114001 - Vanille

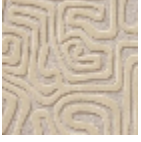


Laize : ,00 cm / ,00 inch

### Pierre Frey

<b>FAMILY</b>	Carpet Rug
<b>TECHNIQUE</b>	Hand-tuft
<b>USE</b>	Moderate traffic
<b>COMPOSITION</b>	53 % Wool 380Tex - 47 % Wool 250Tex
<b>DENSITY</b>	72
<b>PILE</b>	Cut pile Loop pile
<b>ASPECT</b>	Mat - Textured
<b>NUMBER OF COLORS</b>	2
<b>PILE HEIGHT</b>	6.00 mm, 10.00 mm 0.24 inch, 0.39 inch
<b>TOTAL HEIGHT</b>	13.00 mm 0.51 inch
<b>TOTAL WEIGHT</b>	16.08 oz/ft <sup>2</sup>
<b>CERTIFICATIONS</b>	Non testé
<b>NOTES</b>	100% handmade 100% natural fiber
<b>INFORMATION</b>	Production tolerance +/- 3 to 5% Natural irregularities Natural peeling

# 1 Colors



FT114001  
Vanille