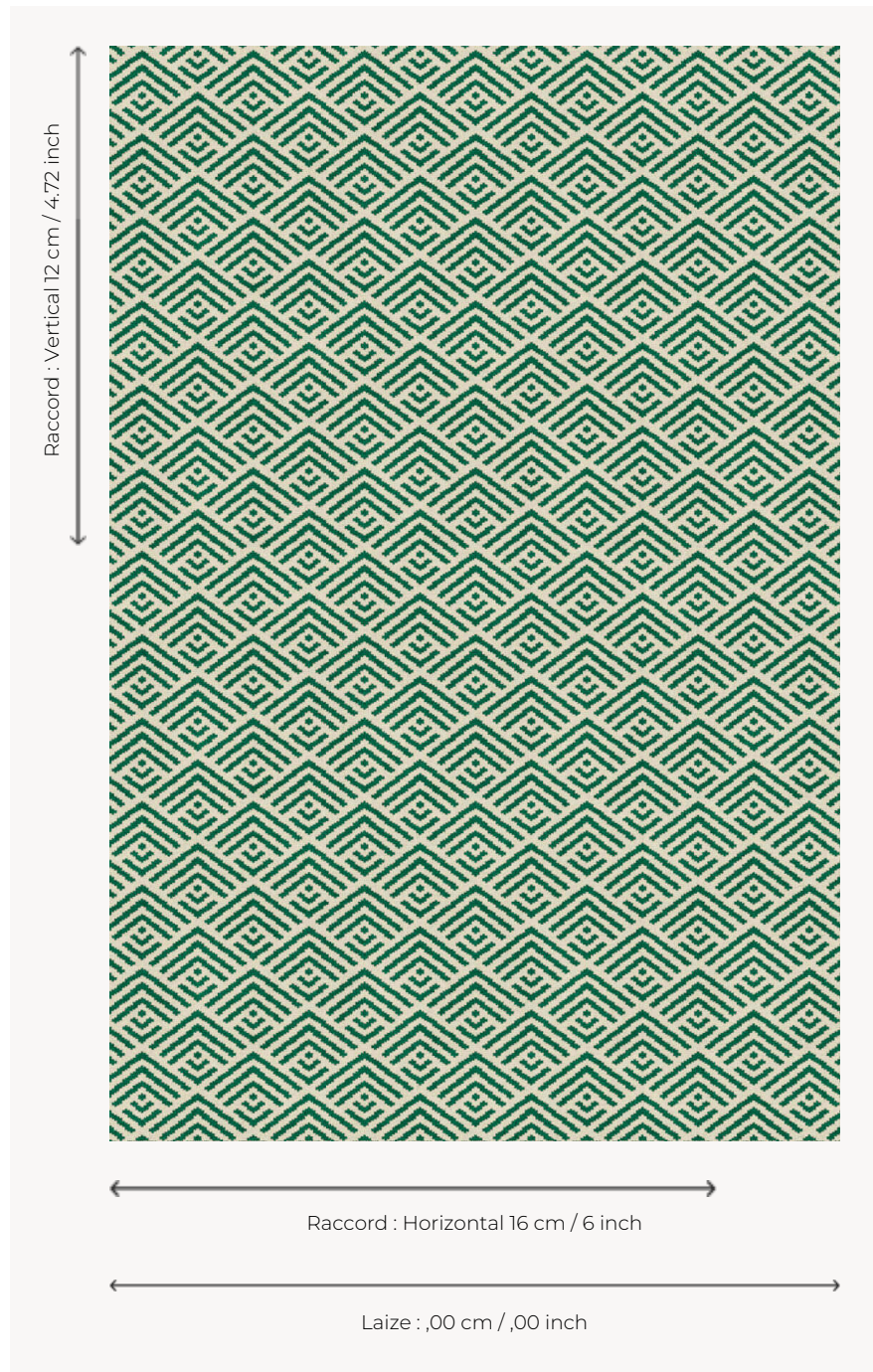


## FT133001 MANI

A beautiful allusion to South American culture and its numerous multicolored markets, MANI and its diamond-shaped motifs evokes basket weaving and wickerwork. This Axminster weaving will be ideal for hotels, restaurants, ...

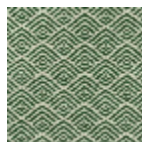
### FT133001 - Vert



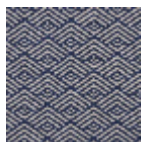
### Pierre Frey

<b>PERFORMANCE</b>	TRAFIC INTENSE - NON FEU
<b>FAMILY</b>	Carpet
<b>TECHNIQUE</b>	Fast-Track woven Axminster
<b>USE</b>	Intensive traffic
<b>COMPOSITION</b>	80 % Wool - 20 % Polyamide
<b>DENSITY</b>	7x10
<b>PILE</b>	Cut pile
<b>ASPECT</b>	Mat
<b>REPEAT</b>	H: 16 cm - 6,00 inch V: 12 cm - 4,72 inch Straight repeat
<b>NUMBER OF COLORS</b>	2
<b>PILE HEIGHT</b>	7.30 mm 0.29 inch
<b>TOTAL HEIGHT</b>	10.00 mm 0.39 inch
<b>TOTAL WEIGHT</b>	7.05 oz/ft <sup>2</sup>
<b>CERTIFICATIONS</b>	Passé
<b>NOTES</b>	Fire retardant Heavy traffic Large width
<b>INFORMATION</b>	Production tolerance +/- 3 to 5% Natural peeling

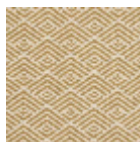
### 3 Colors



FT133001  
Vert



FT133002  
Marine



FT133005  
Jaune