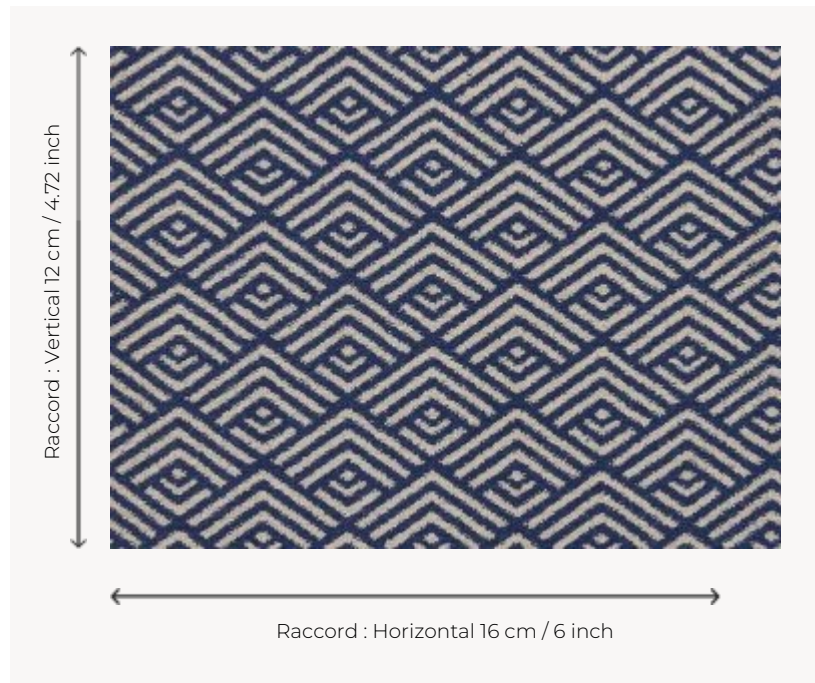


FT133002 MANI

A beautiful allusion to South American culture and its numerous multicolored markets, MANI and its diamond-shaped motifs evokes basket weaving and wickerwork. This Axminster weaving will be ideal for hotels, restaurants, ...

FT133002 - Marine



Pierre Frey

PERFORMANCE TRAFIC INTENSE - NON FEU

FAMILY Carpet

TECHNIQUE Fast-Track woven Axminster

USE Intensive traffic

COMPOSITION 80 % Wool - 20 % Polyamide

DENSITY 7x10

PILE Cut pile

ASPECT Mat

REPEAT H: 16 cm - 6,00 inch
V: 12 cm - 4,72 inch
Straight repeat

NUMBER OF COLORS 2

PILE HEIGHT 7.30 mm
0.29 inch

TOTAL HEIGHT 10.00 mm
0.39 inch

TOTAL WEIGHT 7.05 oz/ft²

CERTIFICATIONS Passé

NOTES Fire retardant
Heavy traffic
Large width

INFORMATION Production tolerance +/- 3 to 5%
Natural peeling

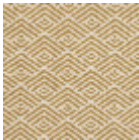
3 Colors



FT133001
Vert



FT133002
Marine



FT133005
Jaune