

FT154001 ZHONG

A series of sharp sawtooth angles, ZHONG evokes both traditional ikate weaving and the classic Hungarian stitch pattern. Very popular in the 17th century, this technique is combined here in a contemporary way with a traditional Nepalese hand-knot.

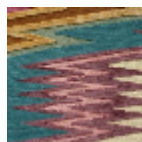
FT154001 - Multicolore



Pierre Frey

FAMILY	Rug
TECHNIQUE	Nepalese hand-knot
USE	Light traffic
COMPOSITION	37 % Wool - 37 % Nettle - 26 % Silk
DENSITY	100 knots/sq.ft
PILE	Cut pile Loop pile
ASPECT	Mat - Textured
NUMBER OF COLORS	10
PILE HEIGHT	8.00 mm, 6.00 mm 0.24 inch, 0.31 inch
TOTAL HEIGHT	10.00 mm 0.39 inch
TOTAL WEIGHT	13.76 oz/ft ²
CERTIFICATIONS	Non testé
NOTES	100% handmade Craft manufacturing 100% natural fiber
INFORMATION	Production tolerance +/- 3 to 5% Natural irregularities Natural peeling

1 Colors



FT154001
Multicolore