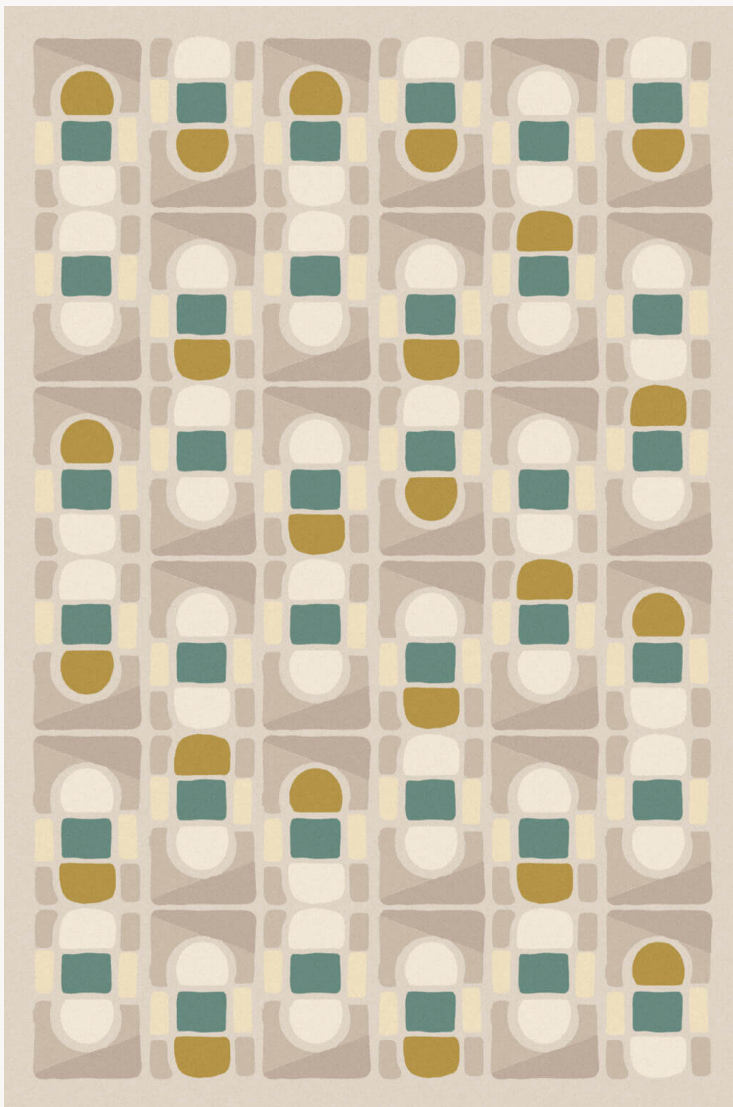


## FT206001 PANYA

Entirely knotted by hand in two lengths of velvet, the blend of New Zealand wool and natural silk gives this carpet its rounded geometric character.

### FT206001 - Verveine



Laize : ,00 cm / ,00 inch

### Pierre Frey

<b>FAMILY</b>	Rug
<b>TECHNIQUE</b>	Nepalese hand-knot
<b>USE</b>	Light traffic
<b>COMPOSITION</b>	66 % Wool - 34 % Silk
<b>DENSITY</b>	100 knots/sq.inch
<b>PILE</b>	Cut pile high and low
<b>ASPECT</b>	Shiny - Mat - Sculpted
<b>NUMBER OF COLORS</b>	7
<b>PILE HEIGHT</b>	8.00 mm, 6.00 mm 0.24 inch, 0.31 inch
<b>TOTAL HEIGHT</b>	9.00 mm 0.35 inch
<b>TOTAL WEIGHT</b>	12.45 oz/ft <sup>2</sup>
<b>CERTIFICATIONS</b>	Non testé
<b>NOTES</b>	100% handmade Craft manufacturing 100% natural fiber
<b>INFORMATION</b>	Production tolerance +/- 3 to 5% Natural irregularities Natural peeling

## 2 Colors



FT206001  
Verveine



FT206002  
CÉLADON