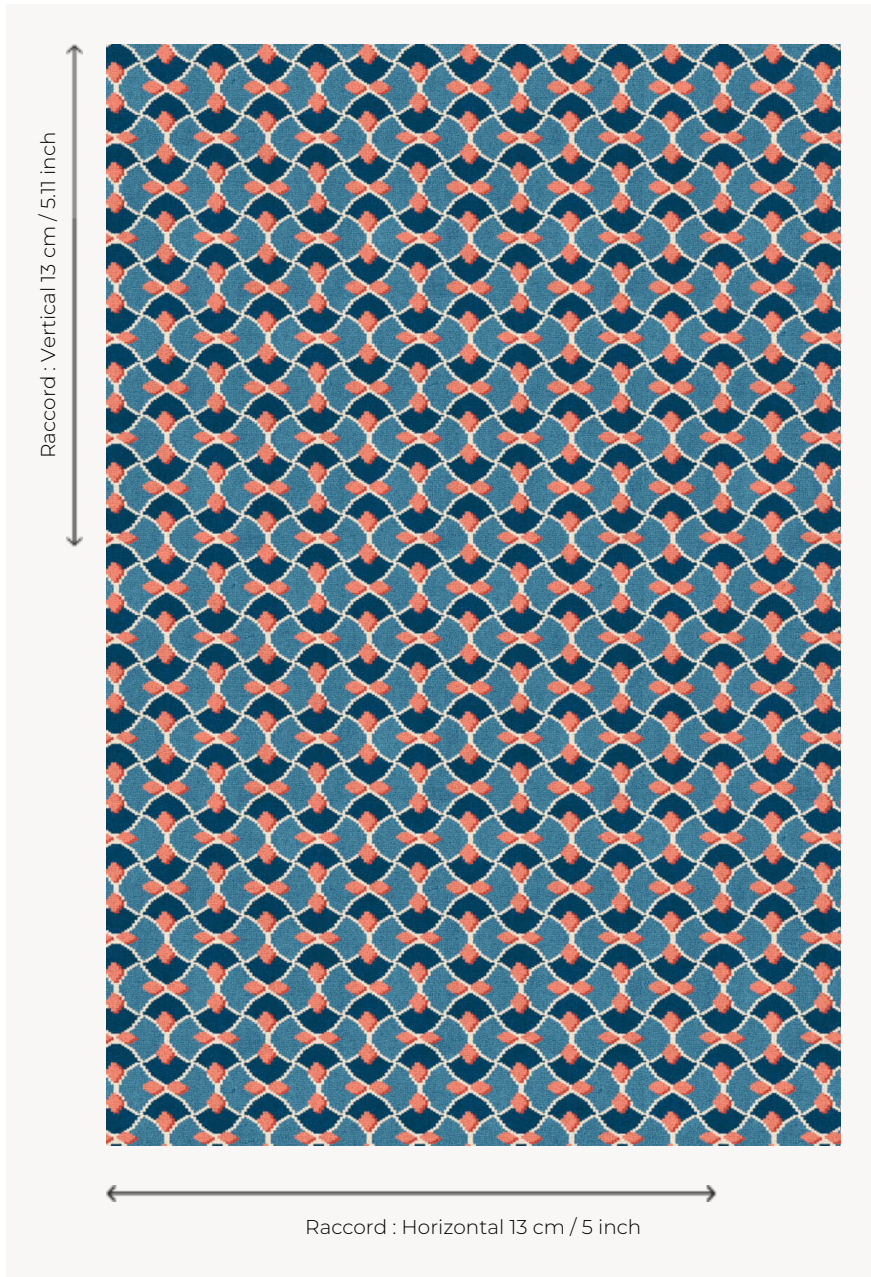


FT211002 AMA

This five-colored carpet offers an original and contemporary variant with small scale, classic carpet motifs.

FT211002 - Canard



Pierre Frey

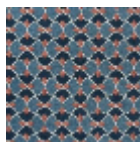
PERFORMANCE	TRAFIC INTENSE - NON FEU
FAMILY	Carpet
TECHNIQUE	Woven Axminster
USE	Intensive traffic
COMPOSITION	80 % Wool - 20 % Polyamide
DENSITY	7x11
PILE	Cut pile
ASPECT	Mat
REPEAT	H: 13 cm - 5,00 inch V: 13 cm - 5,11 inch Straight repeat
NUMBER OF COLORS	5
PILE HEIGHT	7.50 mm 0.30 inch
TOTAL HEIGHT	10.20 mm 0.40 inch
TOTAL WEIGHT	7.79 oz/ft ²
CERTIFICATIONS	Passé
NOTES	Fire retardant Heavy traffic Large width
INFORMATION	Production tolerance +/- 3 to 5% Natural peeling

3 Colors

FT211_FT_0005



FT211001
Colza



FT211002
Canard