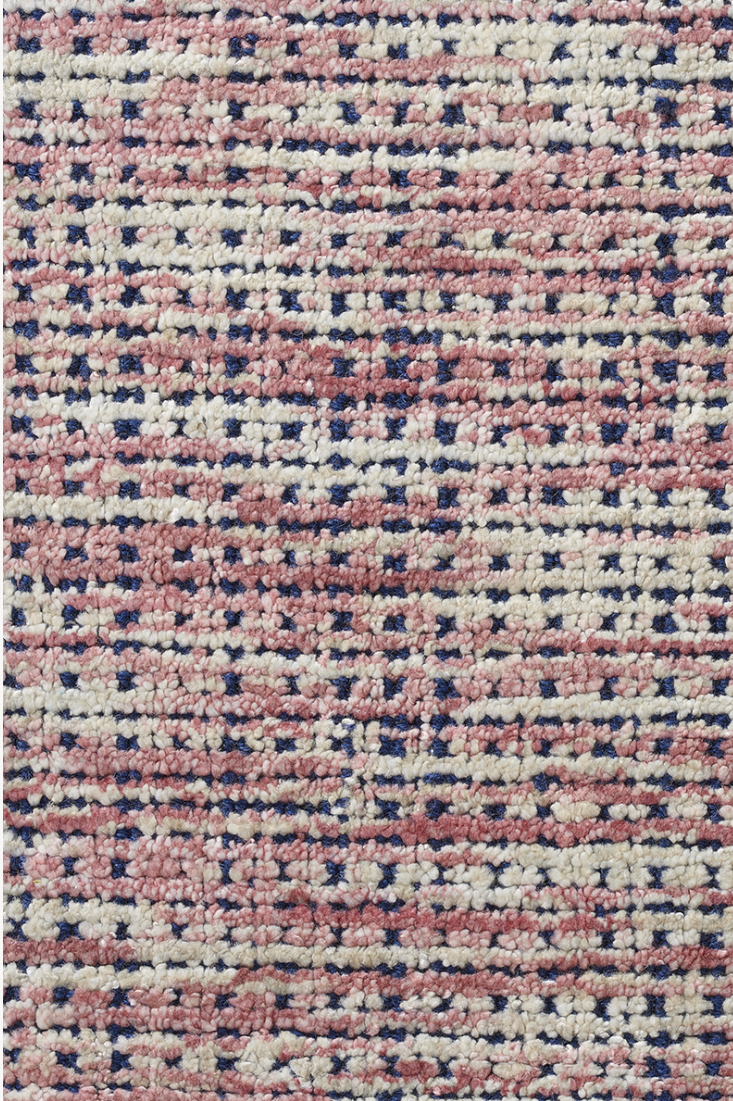


# FT233001 BATOUM

Sophisticated and original semi-plain, a blend of cut and looped velvet, woven on a traditional loom.

## FT233001 - Rose

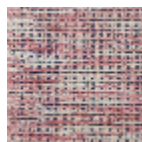


Laize : ,00 cm / ,00 inch

## Pierre Frey

<b>FAMILY</b>	Rug
<b>TECHNIQUE</b>	Woven with pile
<b>USE</b>	Light traffic
<b>COMPOSITION</b>	60 % Viscose - 40 % Wool
<b>PILE</b>	Cut pile Loop pile
<b>ASPECT</b>	Shiny - Textured
<b>NUMBER OF COLORS</b>	3
<b>PILE HEIGHT</b>	8.00 mm, 6.00 mm 0.24 inch, 0.31 inch
<b>TOTAL HEIGHT</b>	9.00 mm 0.35 inch
<b>TOTAL WEIGHT</b>	10.32 oz/ft <sup>2</sup>
<b>CERTIFICATIONS</b>	Non testé
<b>NOTES</b>	Craft manufacturing
<b>INFORMATION</b>	Production tolerance +/- 3 to 5% Natural irregularities Natural peeling No sampling

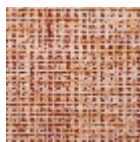
## 6 Colors



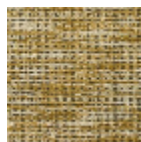
FT233001  
Rose



FT233002  
Curry



FT233003  
Safran



FT233004  
Forêt



FT233005  
Azur



FT233006  
Acajou