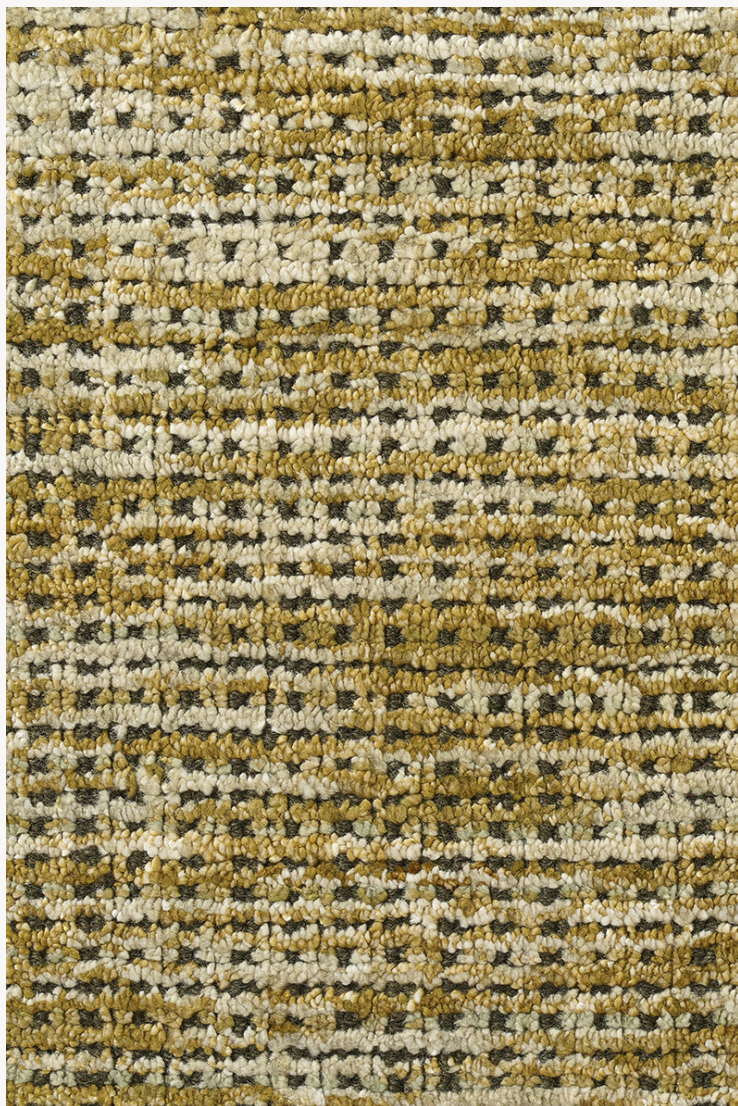


FT233004 BATOUM

Sophisticated and original semi-plain, a blend of cut and looped velvet, woven on a traditional loom.

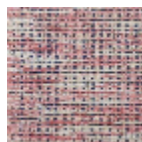
FT233004 - Forêt



Pierre Frey

| | |
|-------------------------|--|
| FAMILY | Rug |
| TECHNIQUE | Woven with pile |
| USE | Light traffic |
| COMPOSITION | 60 % Viscose - 40 % Wool |
| PILE | Cut pile Loop pile |
| ASPECT | Shiny - Textured |
| NUMBER OF COLORS | 3 |
| PILE HEIGHT | 8.00 mm, 6.00 mm 0.24 inch, 0.31 inch |
| TOTAL HEIGHT | 9.00 mm 0.35 inch |
| TOTAL WEIGHT | 10.32 oz/ft ² |
| CERTIFICATIONS | Non testé |
| NOTES | Craft manufacturing |
| INFORMATION | Production tolerance +/- 3 to 5% Natural irregularities Natural peeling No sampling |

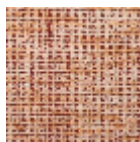
6 Colors



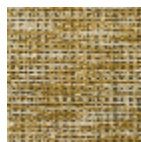
FT233001
Rose



FT233002
Curry



FT233003
Safran



FT233004
Forêt



FT233005
Azur



FT233006
Acajou