

## FT242001 RENE

RENE reproduces the pattern of a velvet imagined in 1929 by René Prou, a great decorator of the inter-war period and grandfather of Patrick Frey, for the Orient-Express. This characteristic Art Deco design covered the seats of the Pullman lounge cars. Enlarged, it expresses all its graphic strength and contemporaneity in a monochrome of grey-green.

### FT242001 - Sauge



### Pierre Frey

**PERFORMANCE** TRAFIC INTENSE - NON FEU

**FAMILY** Rug

**TECHNIQUE** Hand-tuft

**USE** Intensive traffic  
Stairs

**COMPOSITION** 100 % Wool 380Tex

**DENSITY** 88

**PILE** Cut pile

**ASPECT** Mat

**NUMBER OF COLORS** 3

**PILE HEIGHT** 10.00 mm  
0.39 inch

**TOTAL HEIGHT** 13.00 mm  
0.51 inch

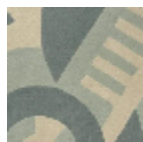
**TOTAL WEIGHT** 17.77 oz/ft<sup>2</sup>

**CERTIFICATIONS** Passé

**NOTES** 100% handmade  
Fire retardant  
Heavy traffic  
100% natural fiber

**INFORMATION** Production tolerance +/- 3 to 5%  
Natural irregularities  
Natural peeling

1 Colors



FT242001  
Sauge