

FT258004 SHEILA

Semi-plain woven on traditional loom rich in textures thanks to a blend of wool, cotton and chenille.
The vibration of the colours is made thanks to a weaving set of 7 different wefts.

FT258004 - Curcuma

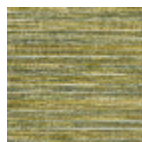


Laize : ,00 cm / ,00 inch

Pierre Frey

FAMILY	Rug
TECHNIQUE	Flat-woven
USE	Light traffic
COMPOSITION	40 % Chenille - 35 % Cotton - 25 % Wool
DENSITY	2,5 Lbs
PILE	Woven
ASPECT	Shiny - Textured
NUMBER OF COLORS	7
PILE HEIGHT	3.00 mm 0.12 inch
TOTAL HEIGHT	3.00 mm 0.11 inch
TOTAL WEIGHT	3.72 oz/ft ²
CERTIFICATIONS	Non testé
NOTES	100% natural fiber
INFORMATION	Production tolerance +/- 3 to 5% Natural irregularities Natural peeling No sampling

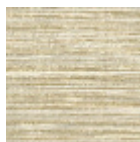
5 Colors



FT258001
Tilleul



FT258002
Bleu



FT258003
Sable



FT258004
Curcuma



FT258005
Vert-de-gris