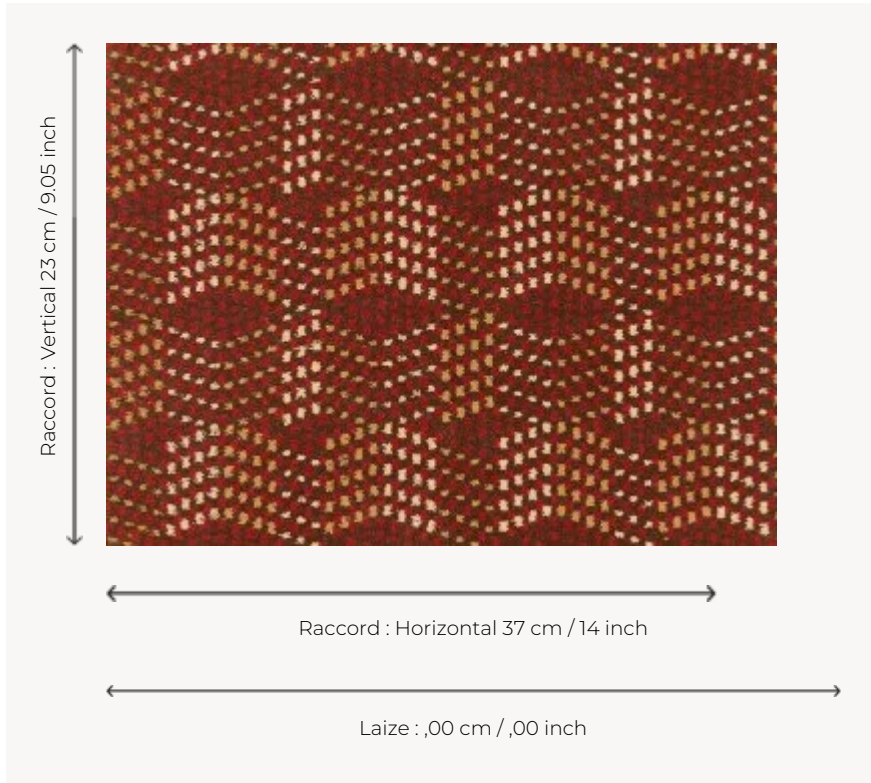


FT261002 OTTI

A tribute to the Bauhaus, a beautiful set of woven tiles in a 4 colour carpet.

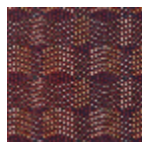
FT261002 - Cuivre



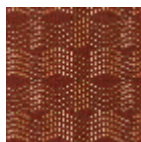
Pierre Frey

| | |
|-------------------------|--|
| PERFORMANCE | TRAFIC INTENSE - NON FEU |
| FAMILY | Carpet |
| TECHNIQUE | Fast-Track woven Axminster |
| USE | Intensive traffic |
| COMPOSITION | 80 % Wool - 20 % Polyamide |
| DENSITY | 7x10 |
| PILE | Cut pile |
| ASPECT | Mat |
| REPEAT | H: 37 cm - 14,00 inch V: 23 cm - 9,05 inch Straight repeat |
| NUMBER OF COLORS | 4 |
| PILE HEIGHT | 7.40 mm 0.29 inch |
| TOTAL HEIGHT | 10.10 mm 0.39 inch |
| TOTAL WEIGHT | 7.18 oz/ft ² |
| CERTIFICATIONS | Passé |
| NOTES | Fire retardant Heavy traffic Large width |
| INFORMATION | Production tolerance +/- 3 to 5% Natural peeling |

3 Colors



FT261001
Nuit



FT261002
Cuivre



FT261003
FOUGÈRE