

FT282001 BRUTALIST

A celebration of Brutalist architecture, of which the Velasca Tower in Milan is one of the most notable examples, this geometric composition plays with perspective like light on a façade. Hand-tufted with cut pile in New-Zealand wool.

FT282001 - Cocktail

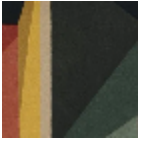


Laize : ,00 cm / ,00 inch

Pierre Frey

PERFORMANCE	TRAFIC INTENSE - NON FEU
FAMILY	Carpet Rug
ARTIST	Ken Fulk
TECHNIQUE	Hand-tuft
USE	Intensive traffic Stairs
COMPOSITION	100 % Wool 380Tex
DENSITY	88
PILE	Cut pile
ASPECT	Mat
NUMBER OF COLORS	10
PILE HEIGHT	10.00 mm 0.39 inch
TOTAL HEIGHT	13.00 mm 0.51 inch
TOTAL WEIGHT	17.77 oz/ft ²
CERTIFICATIONS	Passé
NOTES	100% handmade Fire retardant 100% natural fiber
INFORMATION	Production tolerance +/- 3 to 5% Natural irregularities Natural peeling

1 Colors



FT282001
Cocktail