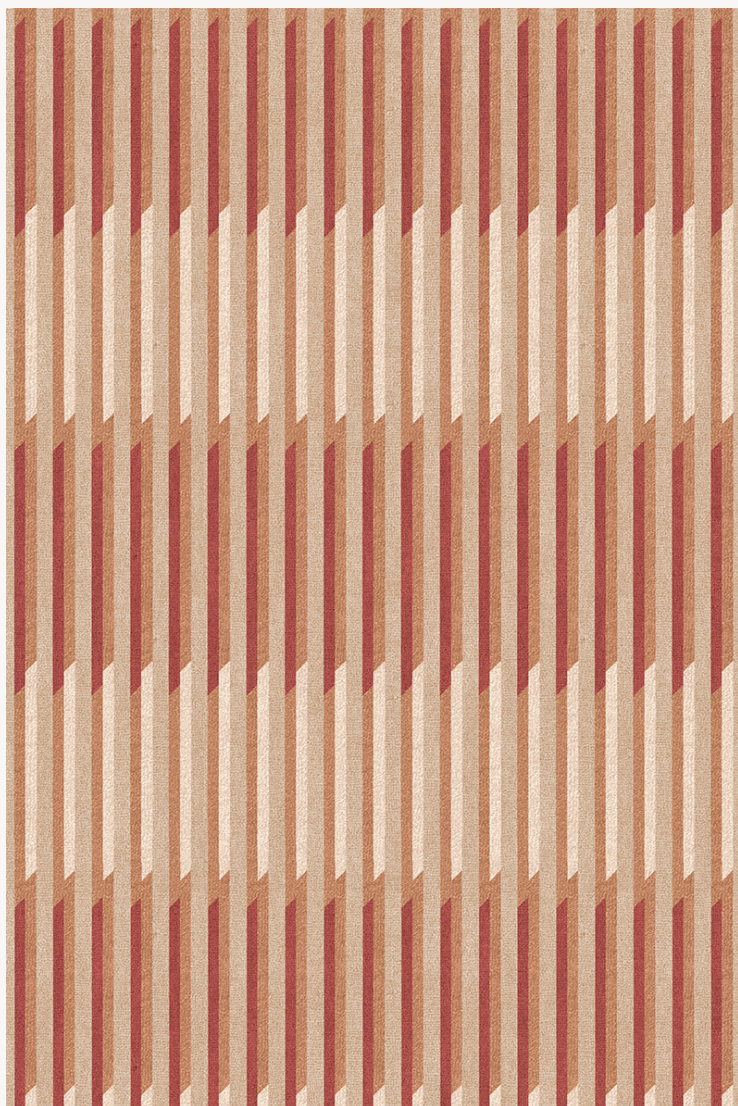


FT283001 KEN'S LINES

A recurring theme in Ken Fulk's designs, the stripes, initially vertical, are playing with the illusion of other horizontals, following the color theories of the Bauhaus artist Josef Albers. Hand-tufted in New Zealand wool and botanical silk, it plays with alternating matte and glossy effects.

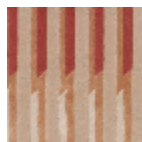
FT283001 - Ballerine



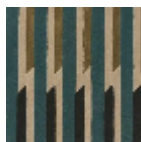
Pierre Frey

FAMILY	Carpet Rug
ARTIST	Ken Fulk
TECHNIQUE	Hand-tuft
USE	Moderate traffic
COMPOSITION	59 % Wool 380Tex - 41 % Bamboo viscose
DENSITY	88
PILE	Cut pile
ASPECT	Shiny - Mat
NUMBER OF COLORS	4
PILE HEIGHT	10.00 mm 0.39 inch
TOTAL HEIGHT	13.00 mm 0.51 inch
TOTAL WEIGHT	17.77 oz/ft ²
CERTIFICATIONS	Non testé
NOTES	100% handmade 100% natural fiber
INFORMATION	Production tolerance +/- 3 to 5% Natural irregularities Natural peeling

2 Colors



FT283001
Ballerine



FT283002
Forêt