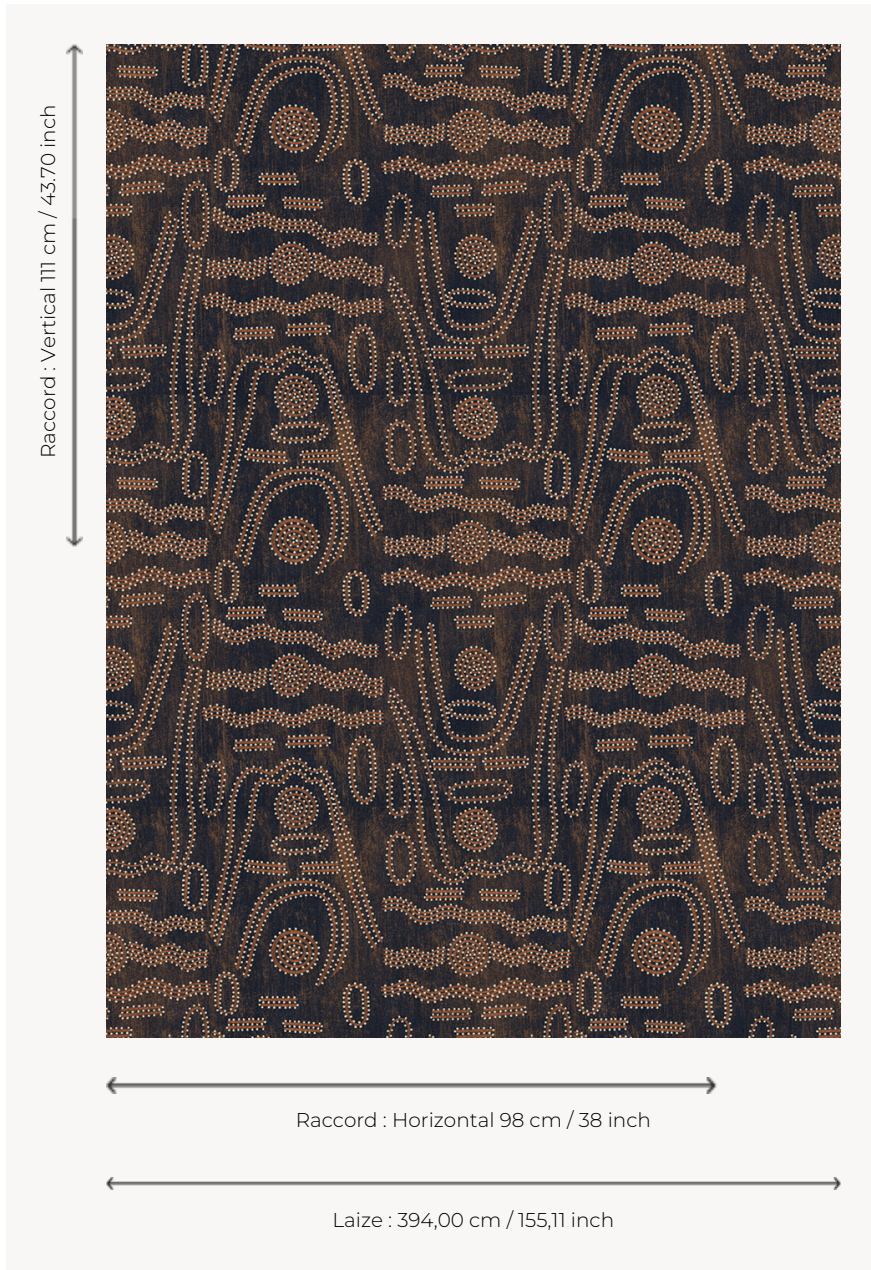


# FT300001 TASMANIA

Printed on cut pile, TASMANIA is made with dots and undulating lines in tribute to the diverse patterns used in Aboriginal art.

## FT300001 - Ebène



## Pierre Frey

|                         |  |
|-------------------------|--|
| <b>PERFORMANCE</b>      | TRAFIC INTENSE - NON FEU   |
| <b>FAMILY</b>           | Carpet<br>Rug  |
| <b>TECHNIQUE</b>        | Printed tuft   |
| <b>USE</b>              | Intensive traffic<br>Stairs  |
| <b>COMPOSITION</b>      | 100 % Polyamide  |
| <b>DENSITY</b>          | 19788 Points/Sq.ft   |
| <b>PILE</b>             | Cut pile   |
| <b>ASPECT</b>           | Mat  |
| <b>WIDTH</b>            | 394 cm / 155,11 inch   |
| <b>REPEAT</b>           | H: 98 cm - 38,00 inch<br>V: 111 cm - 43,70 inch<br>Straight repeat |
| <b>NUMBER OF COLORS</b> | -  |
| <b>PILE HEIGHT</b>      | 6.00 mm<br>0.24 inch   |
| <b>TOTAL HEIGHT</b>     | 8.00 mm<br>0.31 inch   |
| <b>TOTAL WEIGHT</b>     | 7.53 oz/ft <sup>2</sup>  |
| <b>CERTIFICATIONS</b>   | Passé  |
| <b>NOTES</b>            | Fire retardant<br>Heavy traffic<br>Large width                     |
| <b>INFORMATION</b>      | Production tolerance +/- 3 to 5%                                   |

# 1 Colors



FT300001  
Ebène