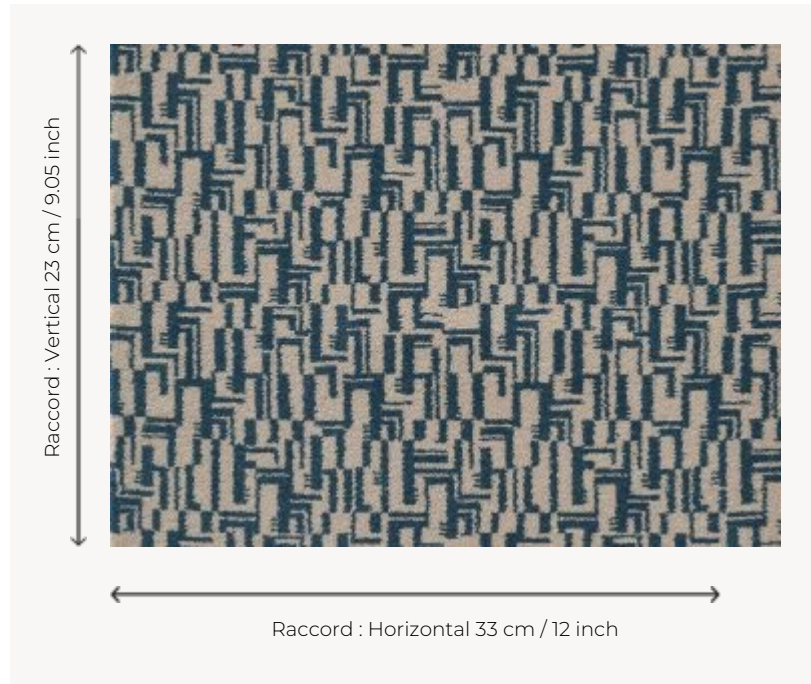


FT314002 TACHA

Small two-tone geometric pattern, based on an archive of the Maison Pierre Frey. TACHA has a simple and timeless charm. Woven in large widths for a carpet resistant to the most intensive use.

FT314002 - CANARD



Pierre Frey

PERFORMANCE	TRAFFIC INTENSE - NON FEU
FAMILY	Carpet
TECHNIQUE	Fast-Track woven Axminster
USE	Intensive traffic
COMPOSITION	80 % Wool - 20 % Polyamide
DENSITY	7x10
PILE	Cut pile
ASPECT	Mat
REPEAT	H: 33 cm - 12,00 inch V: 23 cm - 9,05 inch Straight repeat
NUMBER OF COLORS	2
PILE HEIGHT	7.40 mm 0.29 inch
TOTAL HEIGHT	10.10 mm 0.39 inch
TOTAL WEIGHT	7.18 oz/ft ²
CERTIFICATIONS	Passé
NOTES	Fire retardant Heavy traffic Large width
INFORMATION	Production tolerance +/- 3 to 5% Natural peeling

2 Colors



FT314001
JAUNE



FT314002
CANARD