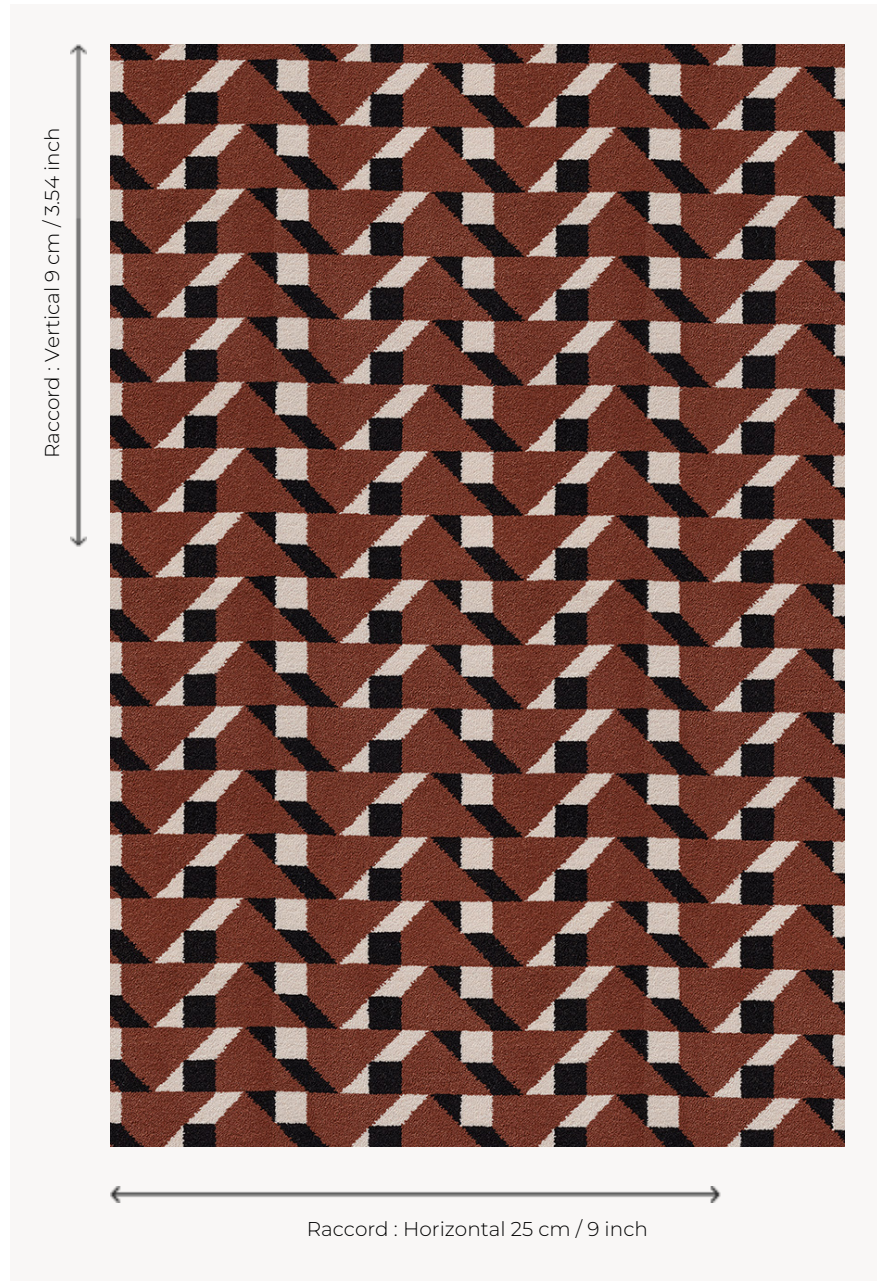


FT317002 DIMITRI

DIMITRI revisits a work of art by the Russian constructivist artist Lyubov Popova from the early 20th century. Its geometric pattern plays on contrasts of color and black and white. Woven in large widths for a carpet resistant to the most intensive use.

FT317002 - BRIQUE



Pierre Frey

PERFORMANCE	TRAFFIC INTENSE - NON FEU
FAMILY	Carpet
TECHNIQUE	Fast-Track woven Axminster
USE	Intensive traffic
COMPOSITION	80 % Wool - 20 % Polyamide
DENSITY	7x10
PILE	Cut pile
ASPECT	Mat
REPEAT	H: 25 cm - 9,00 inch V: 9 cm - 3,54 inch Straight repeat
NUMBER OF COLORS	3
PILE HEIGHT	7.40 mm 0.29 inch
TOTAL HEIGHT	10.10 mm 0.39 inch
TOTAL WEIGHT	7.18 oz/ft ²
CERTIFICATIONS	Passé
NOTES	Fire retardant Heavy traffic Large width
INFORMATION	Production tolerance +/- 3 to 5% Natural peeling

2 Colors



FT317001
OCRE



FT317002
BRIQUE