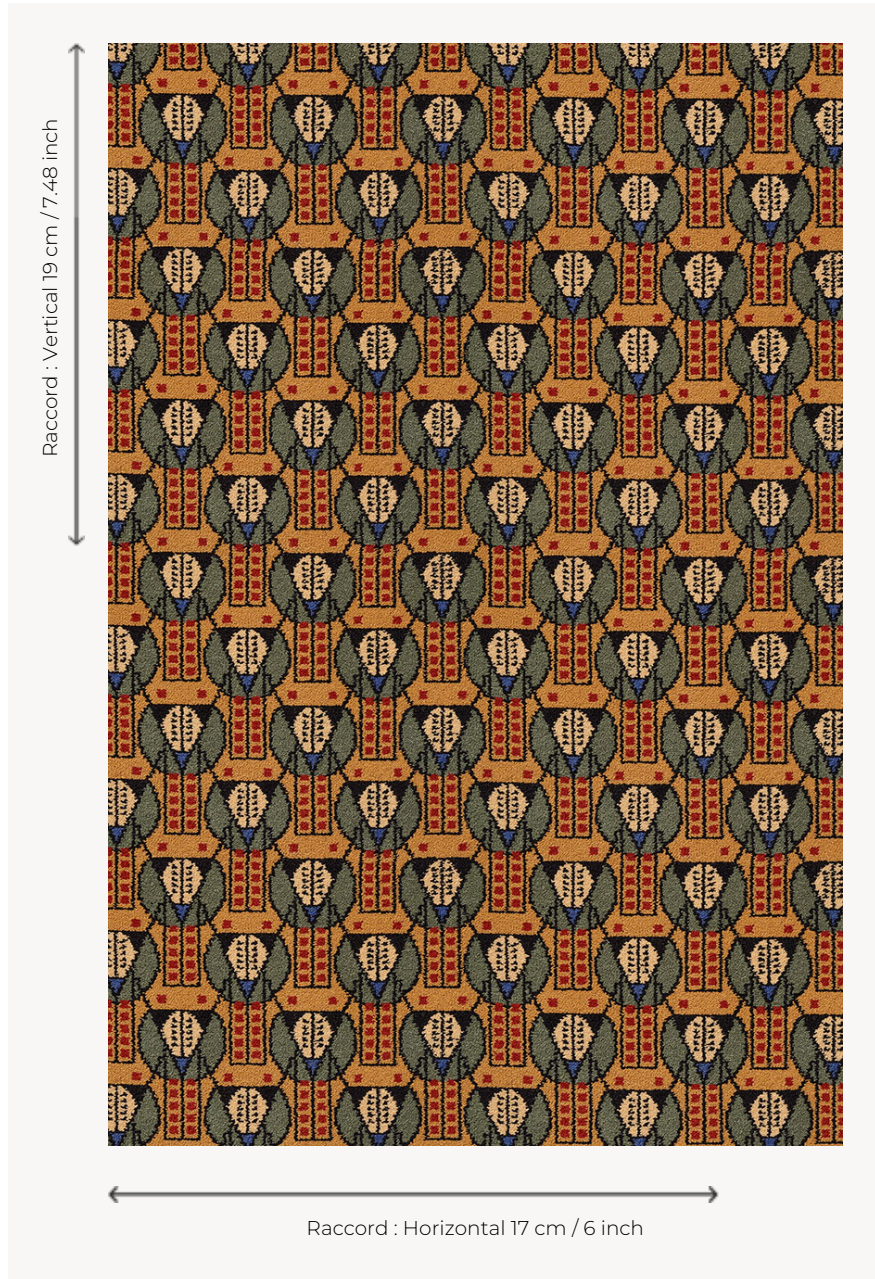


FT320001 HORI

A small graphic design inspired by a textile extracted from a collection of samples dated 1908 and kept in the Pierre Frey archives, which is reminiscent of the impressive modernity of the motifs that adorned the palaces of the Pharaohs. Woven in large width for a carpet resistant to the most intensive use.

FT320001 - BAMBOU



Pierre Frey

PERFORMANCE	TRAFFIC INTENSE - NON FEU
FAMILY	Carpet
TECHNIQUE	Fast-Track woven Axminster
USE	Intensive traffic
COMPOSITION	80 % Wool - 20 % Polyamide
DENSITY	7x10
PILE	Cut pile
ASPECT	Mat
REPEAT	H: 17 cm - 6,00 inch V: 19 cm - 7,48 inch Straight repeat
NUMBER OF COLORS	6
PILE HEIGHT	7.40 mm 0.29 inch
TOTAL HEIGHT	10.10 mm 0.39 inch
TOTAL WEIGHT	7.18 oz/ft ²
CERTIFICATIONS	Passé
NOTES	Fire retardant Heavy traffic Large width
INFORMATION	Production tolerance +/- 3 to 5% Natural peeling

4 Colors

FT320_FT_000
9

FT320_FT_0013



FT320001
BAMBOU



FT320002
SABLE