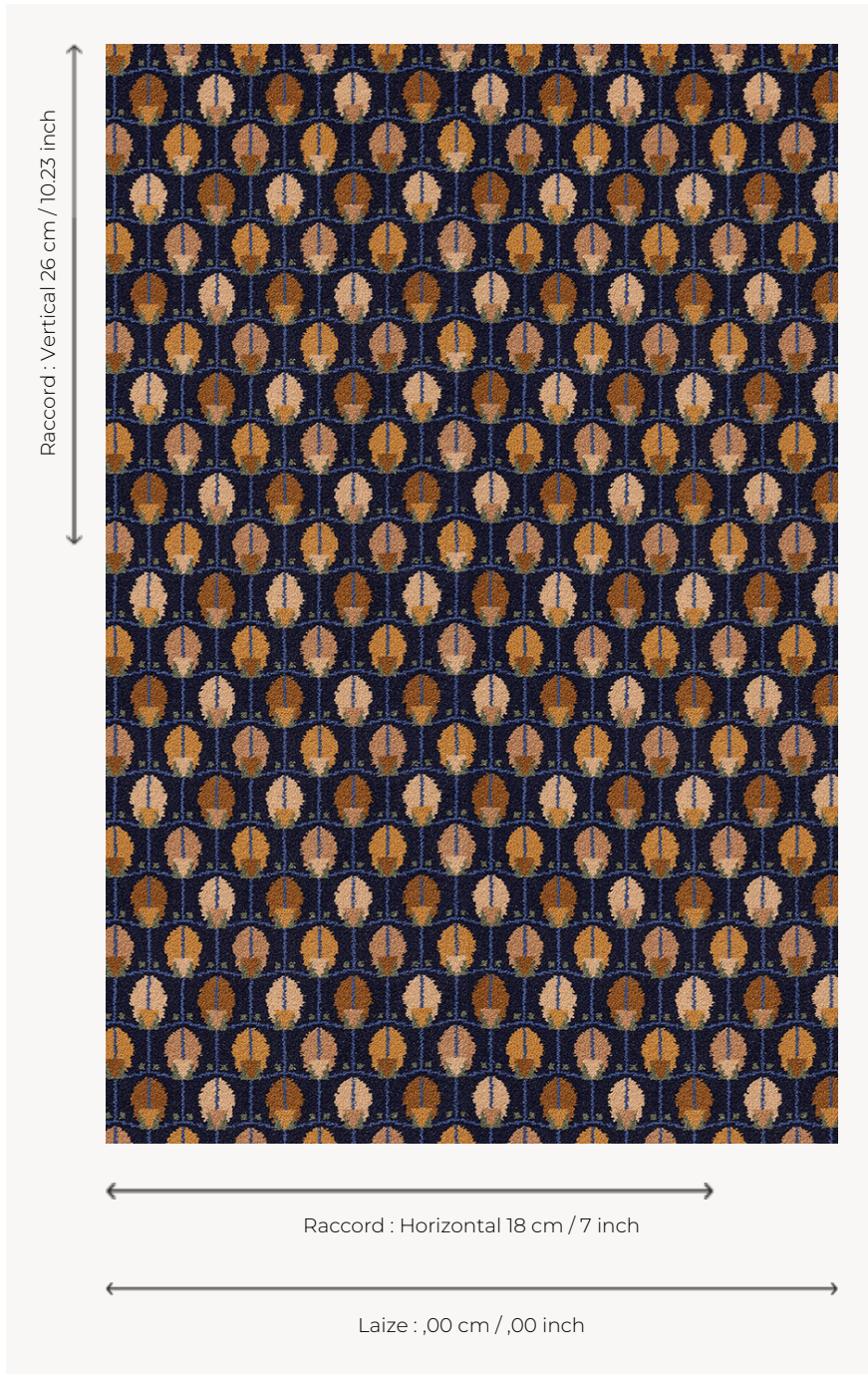


## FT339001 MENNA

This charming little graphic pattern reproduces a textile sample from a 1908 collection in the Pierre Frey archives. Woven in large width for a carpet resistant to the most intensive uses.

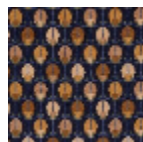
### FT339001 - BLEU DU NIL



### Pierre Frey

<b>PERFORMANCE</b>	TRAFIC INTENSE - NON FEU
<b>FAMILY</b>	Carpet
<b>TECHNIQUE</b>	Fast-Track woven Axminster
<b>USE</b>	Intensive traffic
<b>COMPOSITION</b>	80 % Wool - 20 % Polyamide
<b>DENSITY</b>	7x10
<b>PILE</b>	Cut pile
<b>ASPECT</b>	Mat
<b>REPEAT</b>	H: 18 cm - 7,00 inch V: 26 cm - 10,23 inch Straight repeat
<b>NUMBER OF COLORS</b>	7
<b>PILE HEIGHT</b>	7.40 mm 0.29 inch
<b>TOTAL HEIGHT</b>	10.10 mm 0.39 inch
<b>TOTAL WEIGHT</b>	7.18 oz/ft <sup>2</sup>
<b>CERTIFICATIONS</b>	Non testé
<b>NOTES</b>	Fire retardant Heavy traffic Large width
<b>INFORMATION</b>	Production tolerance +/- 3 to 5% Natural irregularities

## 5 Colors



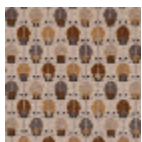
FT339001  
BLEU DU NIL



FT339002  
PALMIER



FT339003  
ORGE



FT339004  
ARGILE



FT339005  
BLÉ