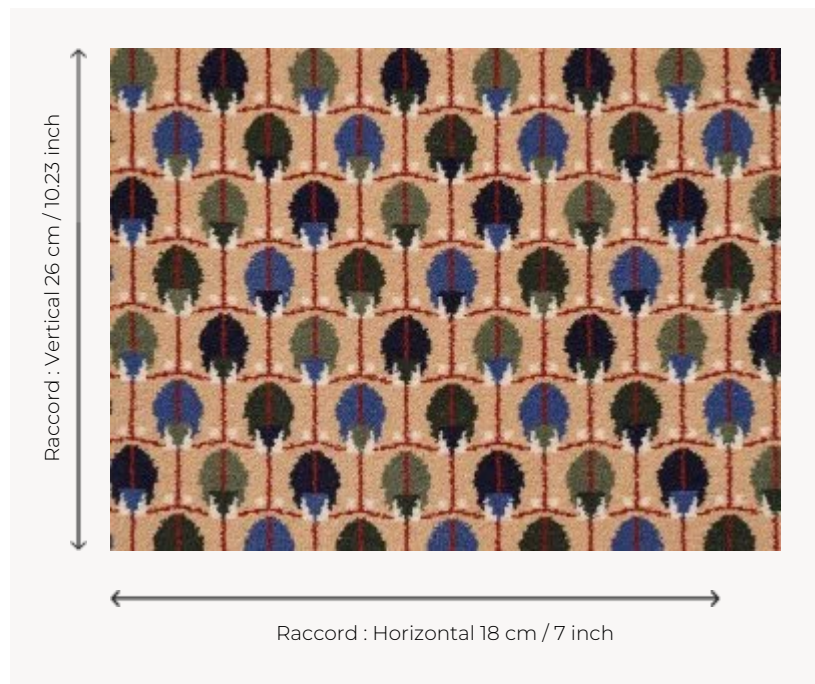


FT339002 MENNA

This charming little graphic pattern reproduces a textile sample from a 1908 collection in the Pierre Frey archives. Woven in large width for a carpet resistant to the most intensive uses.

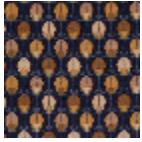
FT339002 - PALMIER



Pierre Frey

PERFORMANCE	TRAFIC INTENSE - NON FEU
FAMILY	Carpet
TECHNIQUE	Fast-Track woven Axminster
USE	Intensive traffic
COMPOSITION	80 % Wool - 20 % Polyamide
DENSITY	7x10
PILE	Cut pile
ASPECT	Mat
REPEAT	H: 18 cm - 7,00 inch V: 26 cm - 10,23 inch Straight repeat
NUMBER OF COLORS	7
PILE HEIGHT	7.40 mm 0.29 inch
TOTAL HEIGHT	10.10 mm 0.39 inch
TOTAL WEIGHT	7.18 oz/ft ²
CERTIFICATIONS	Non testé
NOTES	Fire retardant Heavy traffic Large width
INFORMATION	Production tolerance +/- 3 to 5% Natural irregularities

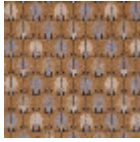
5 Colors



FT339001
BLEU DU NIL



FT339002
PALMIER



FT339003
ORGE



FT339004
ARGILE

FT339005
BLÉ