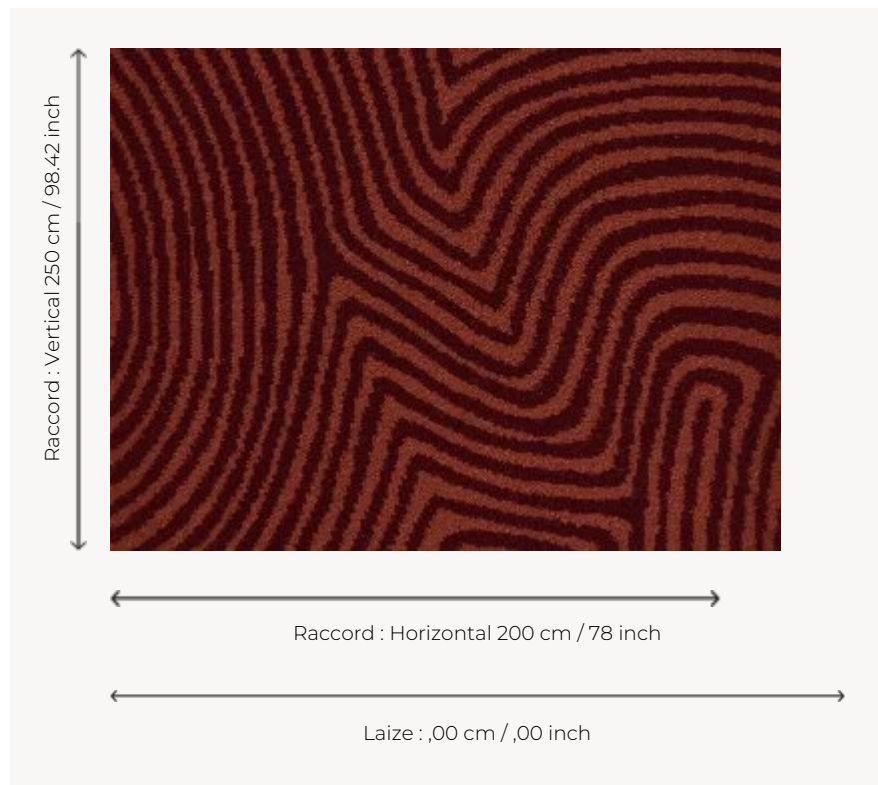


FT415002 TONGA AXMINSTER

This Axminster carpet weaves a pattern reminiscent of the sand paintings of Aboriginal art, in a quality specially designed for high traffic.

FT415002 - Brique



Pierre Frey

PERFORMANCE TRAFIC INTENSE - NON FEU

FAMILY Carpet

TECHNIQUE Fast-Track woven Axminster

USE Intensive traffic

COMPOSITION 80 % Wool - 20 % Polyamide

DENSITY 7x10

PILE Cut pile

ASPECT Mat

REPEAT H: 200 cm - 78,00 inch
V: 250 cm - 98,42 inch
Straight repeat

NUMBER OF COLORS 2

PILE HEIGHT 7.40 mm
0.29 inch

TOTAL HEIGHT 10.10 mm
0.39 inch

TOTAL WEIGHT 7.18 oz/ft²

CERTIFICATIONS Passé

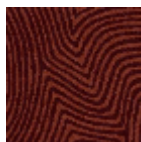
NOTES Fire retardant
Heavy traffic
Large width

INFORMATION Production tolerance +/- 3 to 5%
Natural peeling

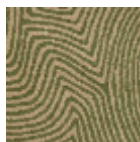
3 Colors



FT415001
Sable



FT415002
Brique



FT415003
Lichen