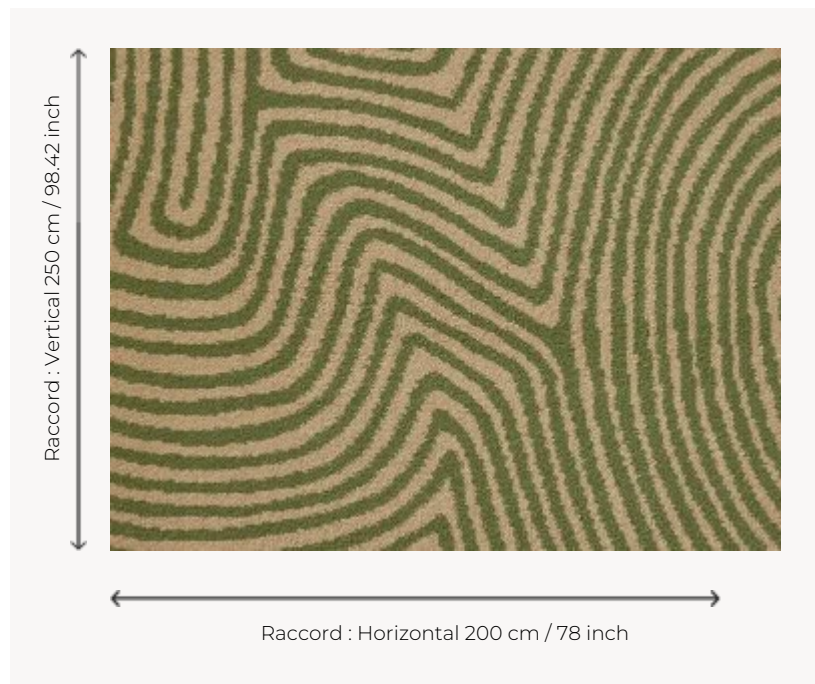


FT415003 TONGA AXMINSTER

This Axminster carpet weaves a pattern reminiscent of the sand paintings of Aboriginal art, in a quality specially designed for high traffic.

FT415003 - Lichen



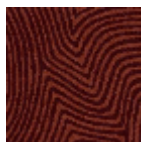
Pierre Frey

| | |
|-------------------------|---|
| PERFORMANCE | TRAFIC INTENSE - NON FEU |
| FAMILY | Carpet |
| TECHNIQUE | Fast-Track woven Axminster |
| USE | Intensive traffic |
| COMPOSITION | 80 % Wool - 20 % Polyamide |
| DENSITY | 7x10 |
| PILE | Cut pile |
| ASPECT | Mat |
| REPEAT | H: 200 cm - 78,00 inch V: 250 cm - 98,42 inch Straight repeat |
| NUMBER OF COLORS | 2 |
| PILE HEIGHT | 7.40 mm 0.29 inch |
| TOTAL HEIGHT | 10.10 mm 0.39 inch |
| TOTAL WEIGHT | 7.18 oz/ft ² |
| CERTIFICATIONS | Passé |
| NOTES | Fire retardant Heavy traffic Large width |
| INFORMATION | Production tolerance +/- 3 to 5% Natural peeling |

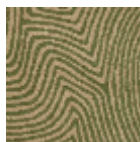
3 Colors



FT415001
Sable



FT415002
Brique



FT415003
Lichen