

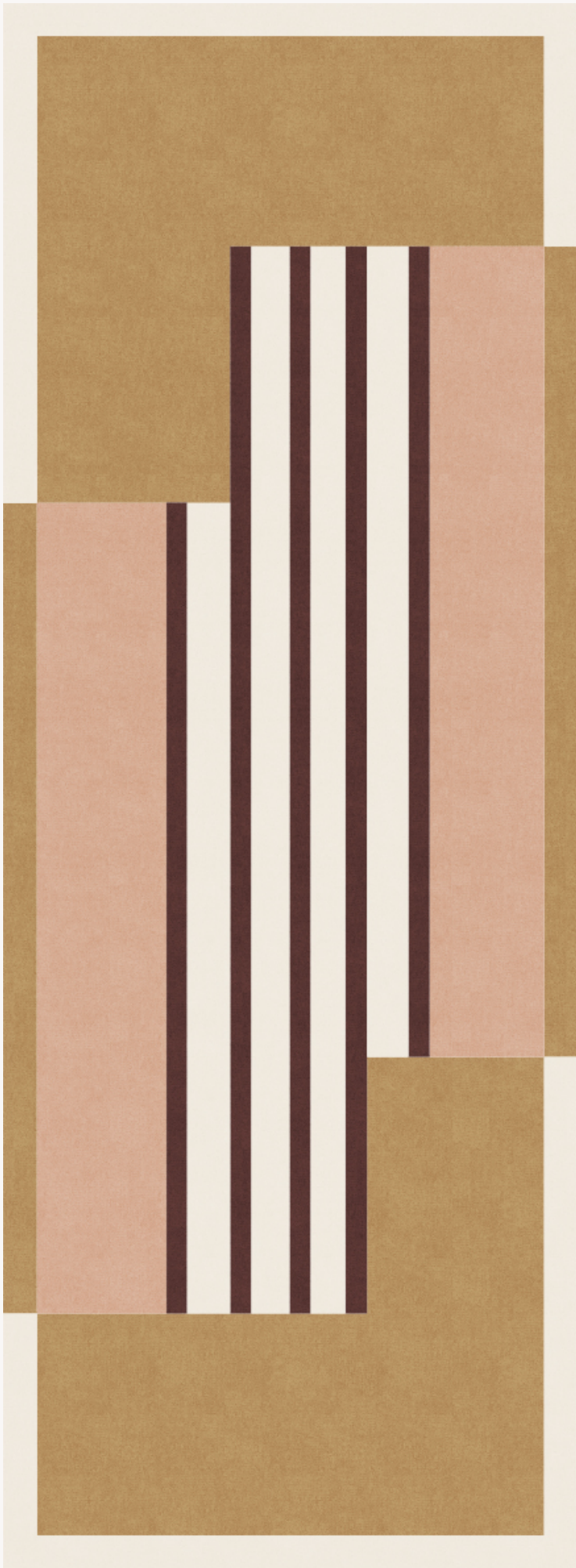


## FT422002 MILAN

This original rug composition was created by the textile designer Elise Djo-Bourgeois in the early 1930s. Hand-tufted in a New Zealand wool pile, it combines graphic modernity and timelessness through a play of cleverly interwoven shapes.

**FT422002 - OR ROSE**

**Pierre Frey**

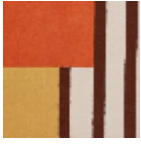


Laize : ,00 cm / ,00 inch

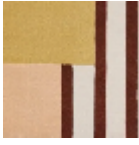


<b>PERFORMANCE</b>	TRAFIC INTENSE - NON FEU
<b>FAMILY</b>	Carpet Rug
<b>ARTIST</b>	Élise Djo-Bourgeois
<b>TECHNIQUE</b>	Hand-tuft
<b>USE</b>	Intensive traffic Stairs
<b>COMPOSITION</b>	100 % Wool 380Tex
<b>DENSITY</b>	88
<b>PILE</b>	Cut pile
<b>ASPECT</b>	Mat
<b>NUMBER OF COLORS</b>	4
<b>PILE HEIGHT</b>	10.00 mm 0.39 inch
<b>TOTAL HEIGHT</b>	13.00 mm 0.51 inch
<b>TOTAL WEIGHT</b>	17.77 oz/ft <sup>2</sup>
<b>CERTIFICATIONS</b>	Passé
<b>NOTES</b>	100% handmade Fire retardant Heavy traffic 100% natural fiber
<b>INFORMATION</b>	Production tolerance +/- 3 to 5% Natural irregularities Natural peeling

# 3 Colors



FT422001  
TOMATE



FT422002  
OR ROSE

FT422\_HT\_002  
OR ROSE