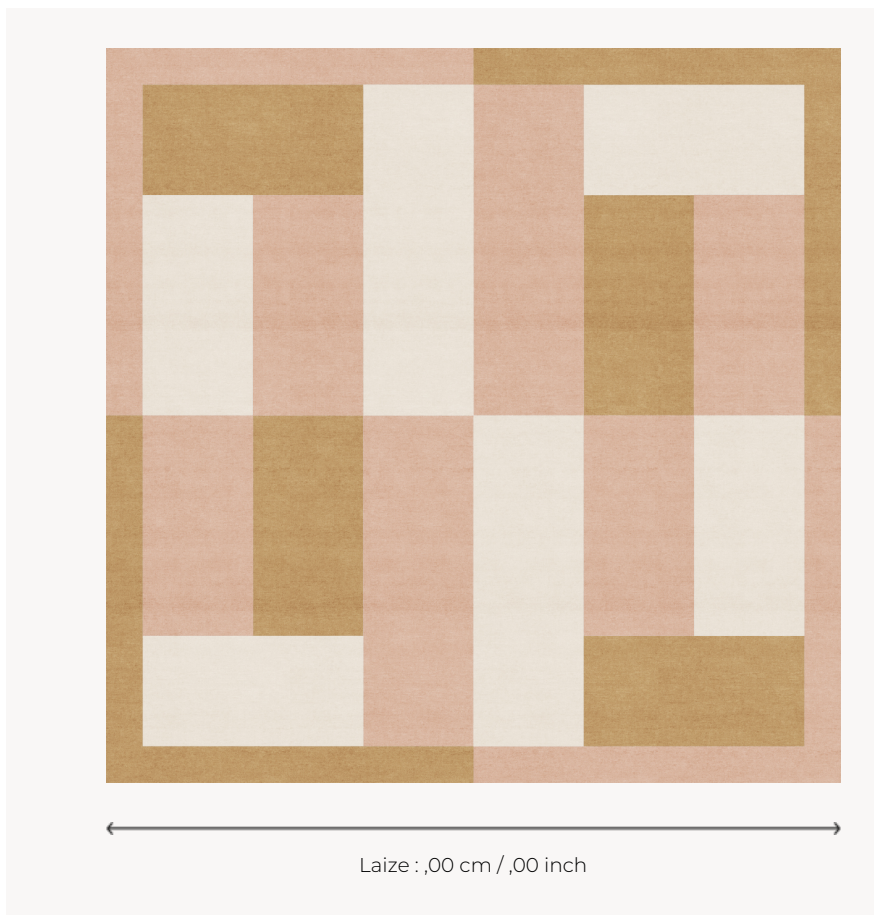


## FT423001 MABLETON

This rug design was imagined by the textile designer Elise Djo-Bourgeois circa 1928. Original by its square format, this composition is made in a traditional hand-knotted wool pile from the Himalayas.

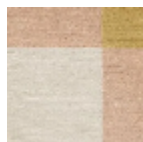
### FT423001 - Or rose



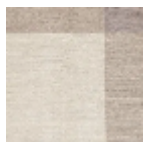
### Pierre Frey

<b>FAMILY</b>	Carpet Rug
<b>ARTIST</b>	Élise Djo-Bourgeois
<b>TECHNIQUE</b>	Nepalese hand-knot
<b>USE</b>	Moderate traffic Stairs
<b>COMPOSITION</b>	100 % Wool
<b>DENSITY</b>	80 knots/sq.inch
<b>PILE</b>	Cut pile
<b>ASPECT</b>	Mat
<b>NUMBER OF COLORS</b>	3
<b>PILE HEIGHT</b>	10.00 mm 0.39 inch
<b>TOTAL HEIGHT</b>	10.00 mm 0.39 inch
<b>TOTAL WEIGHT</b>	11.47 oz/ft <sup>2</sup>
<b>CERTIFICATIONS</b>	Non testé
<b>NOTES</b>	100% handmade Craft manufacturing 100% natural fiber
<b>INFORMATION</b>	Production tolerance +/- 3 to 5% Natural irregularities Natural peeling

## 2 Colors



FT423001  
Or rose



FT423002  
Gris perle