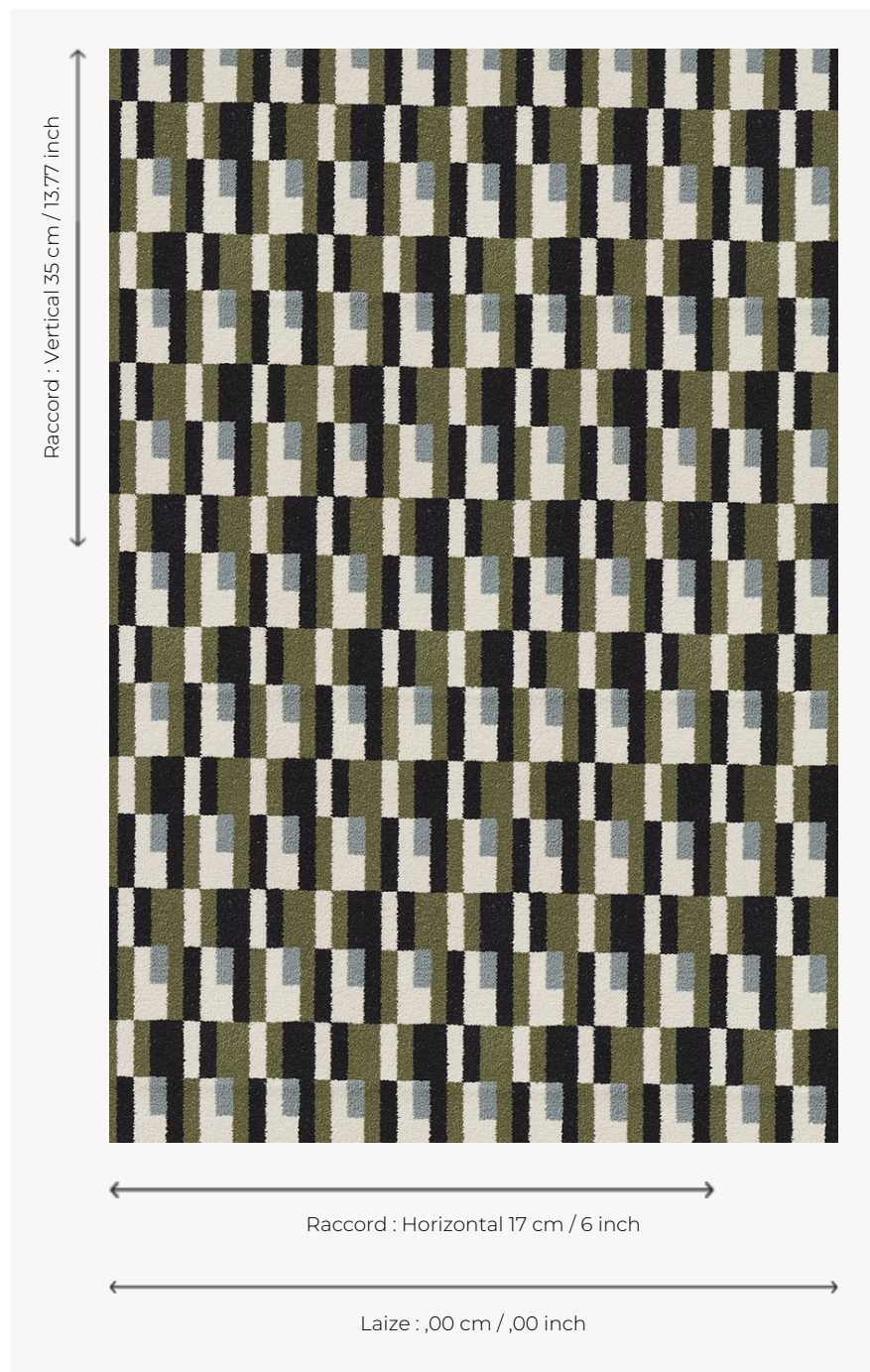


FT424001 MONTEVIDEO

This timeless and modernist design was created by the textile designer Elise Djo-Bourgeois circa 1927. It features geometric interlocking patterns. Reinterpreted in an Axminster jacquard carpet, a weaving technique specific for high traffic, this graphic pattern is available in two colors.

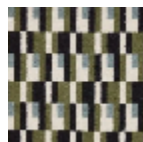
FT424001 - NOIR/VERT



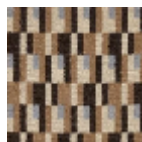
Pierre Frey

PERFORMANCE	TRAFIC INTENSE - NON FEU
FAMILY	Carpet
ARTIST	Élise Djo-Bourgeois
TECHNIQUE	Fast-Track woven Axminster
USE	Intensive traffic
COMPOSITION	80 % Wool - 20 % Polyamide
DENSITY	7x10
PILE	Cut pile
ASPECT	Mat
REPEAT	H: 17 cm - 6,00 inch V: 35 cm - 13,77 inch Straight repeat
NUMBER OF COLORS	5
PILE HEIGHT	7.40 mm 0.29 inch
TOTAL HEIGHT	10.10 mm 0.39 inch
TOTAL WEIGHT	7.18 oz/ft ²
CERTIFICATIONS	Passé
NOTES	Fire retardant Heavy traffic
INFORMATION	Production tolerance +/- 3 to 5% Natural irregularities

2 Colors



FT424001
NOIR/VERT



FT424002
BRUN