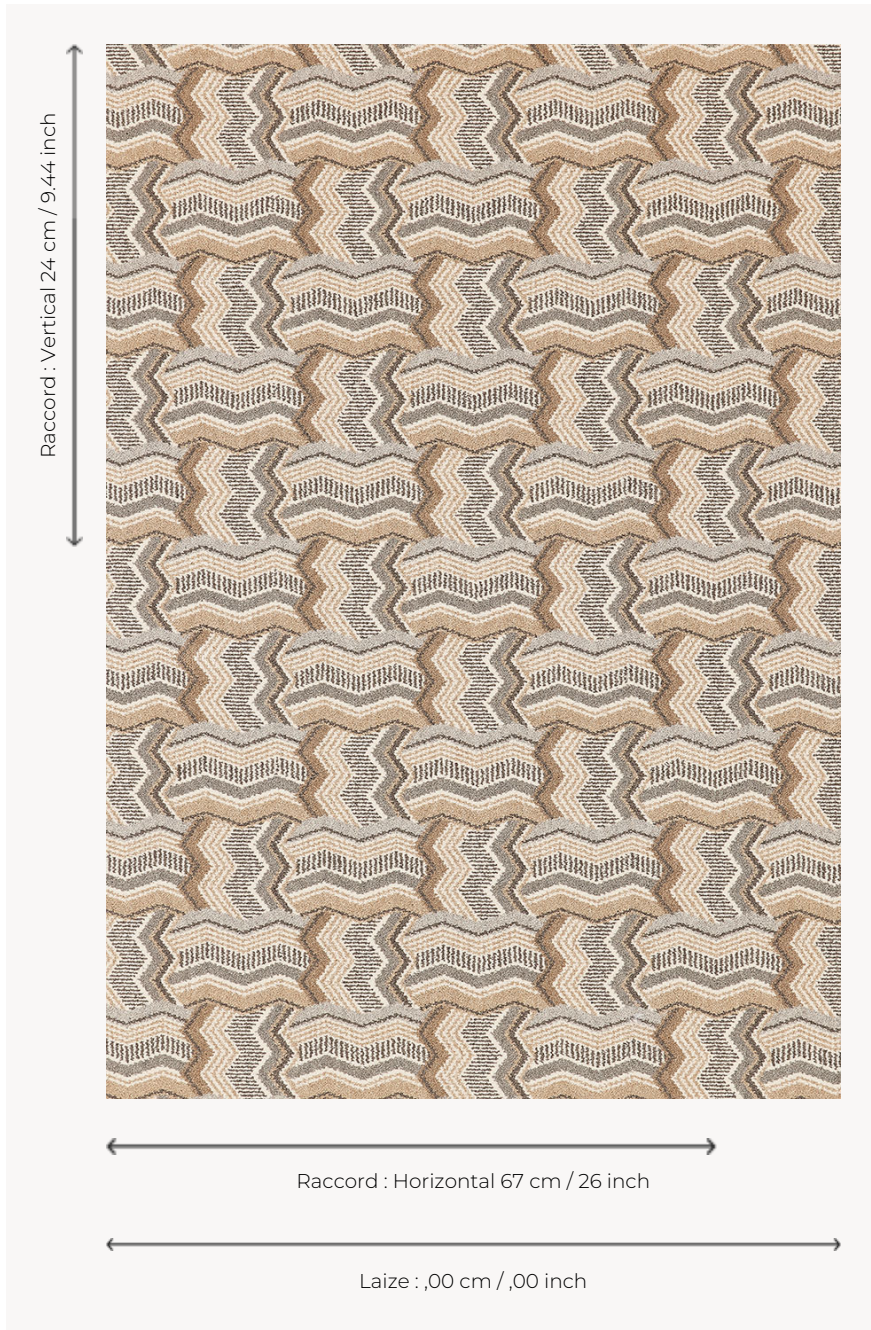


FT446001 CASCADE

This geometric pattern is inspired by the art of basketry. It comes in two color variants: naturals and blues, both of which highlight the vibrancy of the design.

FT446001 - Naturel



Pierre Frey

PERFORMANCE	TRAFIC INTENSE - NON FEU
FAMILY	Carpet
TECHNIQUE	Fast-Track woven Axminster
USE	Intensive traffic Stairs
COMPOSITION	80 % Wool - 20 % Polyamide
DENSITY	7x10
PILE	Cut pile
ASPECT	Mat
REPEAT	H: 67 cm - 26,00 inch V: 24 cm - 9,44 inch Straight repeat
NUMBER OF COLORS	6
PILE HEIGHT	7.40 mm 0.29 inch
TOTAL HEIGHT	10.10 mm 0.39 inch
TOTAL WEIGHT	7.18 oz/ft ²
NOTES	Fire retardant Heavy traffic Large width
INFORMATION	Production tolerance +/- 3 to 5% Natural irregularities Natural peeling

5 Colors

FT446_AX_00S
P
Custom

FT446_FT_0012
Naturel - cgl -
benotteau

FT446_FT_002
Naturel -mae
nairobi



FT446001
Naturel



FT446002
Souris