

FT448002 COENDOU

Irregular and contemporary stripes evoking multiple forms of craftsmanship, COENDOU is woven in Axminster and available in two colorways.

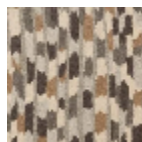
FT448002 - RIVIERE



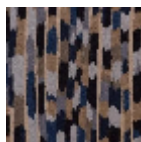
Pierre Frey

PERFORMANCE	TRAFIC INTENSE - NON FEU
FAMILY	Carpet
TECHNIQUE	Fast-Track woven Axminster
USE	Intensive traffic Stairs
COMPOSITION	80 % Wool - 20 % Polyamide
DENSITY	7x10
PILE	Cut pile
ASPECT	Mat
REPEAT	H: 67 cm - 26,00 inch V: 179 cm - 70,47 inch Straight repeat
NUMBER OF COLORS	8
PILE HEIGHT	7.40 mm 0.29 inch
TOTAL HEIGHT	10.10 mm 0.39 inch
TOTAL WEIGHT	7.18 oz/ft ²
NOTES	Fire retardant Heavy traffic Large width
INFORMATION	Production tolerance +/- 3 to 5% Natural irregularities Natural peeling

2 Colors



FT448001
NATUREL



FT448002
RIVIERE