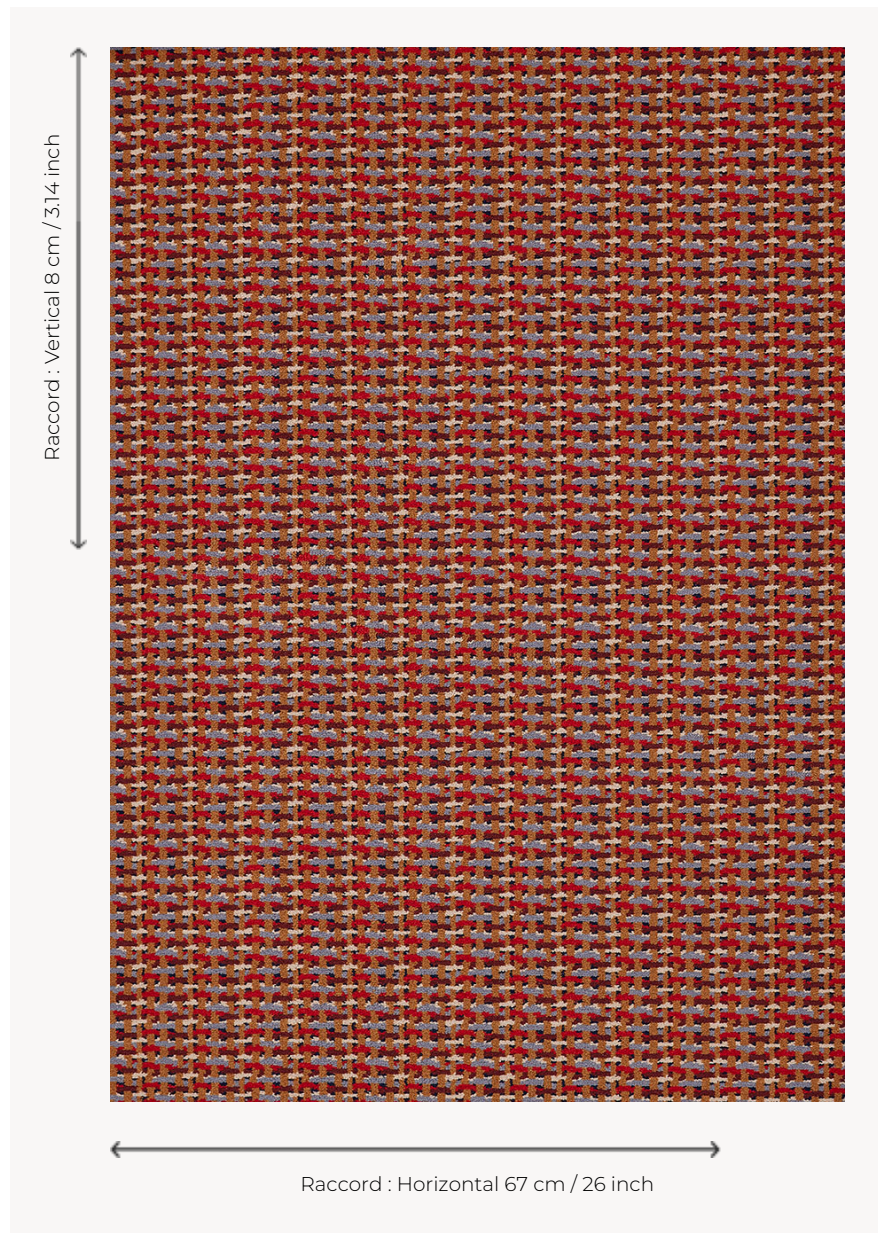


FT450001 AWA

This semi-plain is reminiscent of traditional weavings thanks to its play of cheerful and graphic colors.

FT450001 - Safran



Pierre Frey

PERFORMANCE TRAFIC INTENSE - NON FEU

FAMILY Carpet

TECHNIQUE Fast-Track woven Axminster

USE Intensive traffic
Stairs

COMPOSITION 80 % Wool - 20 % Polyamide

DENSITY 7x10

PILE Cut pile

ASPECT Mat

REPEAT H: 67 cm - 26,00 inch
V: 8 cm - 3,14 inch
Straight repeat

NUMBER OF COLORS 6

PILE HEIGHT 7.40 mm
0.29 inch

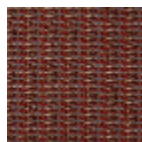
TOTAL HEIGHT 10.10 mm
0.39 inch

TOTAL WEIGHT 7.18 oz/ft²

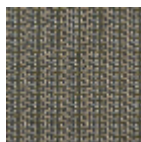
NOTES Fire retardant
Heavy traffic
Large width

INFORMATION Production tolerance +/- 3 to 5%
Natural irregularities
Natural peeling

2 Colors



FT450001
Safran



FT450002
Fougere