

## FT454001 HITOE

The HITOE rug celebrates the interweaving of fabrics found in traditional Japanese kimonos. The combination of bamboo and wool, tufted by hand, lends richness to all the motifs that make up the rug.

### FT454001 - Multicolore

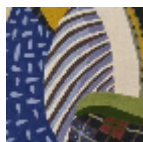


Laize : ,00 cm / ,00 inch

### Pierre Frey

|                         |   |
|-------------------------|---|
| <b>FAMILY</b>           | Rug   |
| <b>TECHNIQUE</b>        | Hand-tuft   |
| <b>USE</b>              | Light traffic   |
| <b>COMPOSITION</b>      | 82 % Wool 380Tex - 18 % Bamboo viscose  |
| <b>DENSITY</b>          | 88 Oz/y <sup>2</sup>  |
| <b>PILE</b>             | Cut pile  |
| <b>ASPECT</b>           | Shiny - Mat   |
| <b>NUMBER OF COLORS</b> | 13  |
| <b>PILE HEIGHT</b>      | 10.00 mm<br>0.39 inch   |
| <b>TOTAL HEIGHT</b>     | 13.00 mm<br>0.51 inch   |
| <b>TOTAL WEIGHT</b>     | 18.24 oz/ft <sup>2</sup>  |
| <b>NOTES</b>            | 100% handmade<br>100% natural fiber   |
| <b>INFORMATION</b>      | Production tolerance +/- 3 to 5%<br>Natural irregularities<br>Natural peeling |

## 2 Colors



FT454-HT\_001  
Multicolore

FT454001  
Multicolore