

FT478001 CALIFORNIE

"CALIFORNIE" is a low-warp tapestry created by monk and artist Dom Robert (1907-1997), and woven in 1958 by the Goubely workshop in Aubusson, France. A highly stylized composition from the "Bird Trees" tapestry series created by Dom Robert in the 1950s, "CALIFORNIE" plunges us into the midst of the flight of variegated birds flying over or hiding in clumps of plants, recalling the lushness and freshness of Persian miniatures. Redesigned as a rug, the artist's original hand is translated into hand-tuft, in wool loops on a background of New Zealand wool pile.

FT478001 - SOLEIL

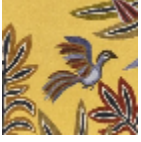


Laize : ,00 cm / ,00 inch

Pierre Frey

FAMILY	Rug
ARTIST	Dom Robert © Abbaye D'En Calcat
TECHNIQUE	Hand-tuft
USE	Moderate traffic Stairs
COMPOSITION	100 % Wool 380Tex
DENSITY	88 Oz/y2
PILE	Cut pile Loop pile Tip shearing
ASPECT	Mat
NUMBER OF COLORS	15
PILE HEIGHT	7.00 mm 0.28 inch
TOTAL HEIGHT	10.00 mm 0.39 inch
TOTAL WEIGHT	17.77 oz/ft ²
NOTES	100% handmade 100% natural fiber
INFORMATION	Production tolerance +/- 3 to 5% Natural irregularities Natural peeling

1 Colors



FT478001
SOLEIL