

## FT485001 LUBIN

A creation inspired by a patchwork of animal skins, LUBIN is a magnificent Nepalese hand-knotted rug. On a leopard wool pile background, two wild beasts dance and play in the heart of the desert.

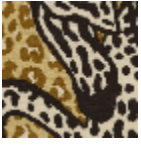
### FT485001 - FAUVE



### Pierre Frey

<b>FAMILY</b>	Rug
<b>TECHNIQUE</b>	Nepalese hand-knot
<b>USE</b>	Moderate traffic Stairs
<b>COMPOSITION</b>	100 % Wool
<b>DENSITY</b>	100 knots/sq.inch
<b>PILE</b>	Cut pile
<b>ASPECT</b>	Mat
<b>NUMBER OF COLORS</b>	5
<b>PILE HEIGHT</b>	5.00 mm 0.20 inch
<b>TOTAL HEIGHT</b>	10.00 mm 0.39 inch
<b>TOTAL WEIGHT</b>	10.81 oz/ft <sup>2</sup>
<b>NOTES</b>	100% handmade Craft manufacturing 100% natural fiber
<b>INFORMATION</b>	Production tolerance +/- 3 to 5% Natural irregularities Natural peeling

# 1 Colors



FT485001  
FAUVE