

## FT489002 MOPTI

MOPTI is a Fast-track Axminster carpet inspired by the underground tunnels dug by small animals living in the heart of the Sahara dunes. Developed in 2 colorways, this vermiculated carpet adapts perfectly to large widths.

### FT489002 - DUNES



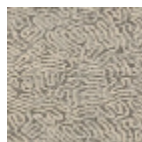
Raccord : Horizontal 100 cm / 39 inch

Laize : ,00 cm / ,00 inch

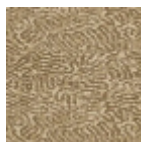
### Pierre Frey

<b>PERFORMANCE</b>	TRAFIC INTENSE - NON FEU
<b>FAMILY</b>	Carpet
<b>TECHNIQUE</b>	Fast-Track woven Axminster
<b>USE</b>	Intensive traffic Stairs
<b>COMPOSITION</b>	80 % Wool - 20 % Polyamide
<b>DENSITY</b>	7x10
<b>PILE</b>	Cut pile
<b>ASPECT</b>	Mat
<b>REPEAT</b>	H: 100 cm - 39,00 inch V: 35 cm - 13,77 inch Straight repeat
<b>NUMBER OF COLORS</b>	4
<b>PILE HEIGHT</b>	7.40 mm 0.29 inch
<b>TOTAL HEIGHT</b>	10.10 mm 0.39 inch
<b>TOTAL WEIGHT</b>	7.18 oz/ft <sup>2</sup>
<b>NOTES</b>	Fire retardant Heavy traffic Large width
<b>INFORMATION</b>	Production tolerance +/- 3 to 5% Natural irregularities Natural peeling

## 2 Colors



FT489001  
PERLE



FT489002  
DUNES