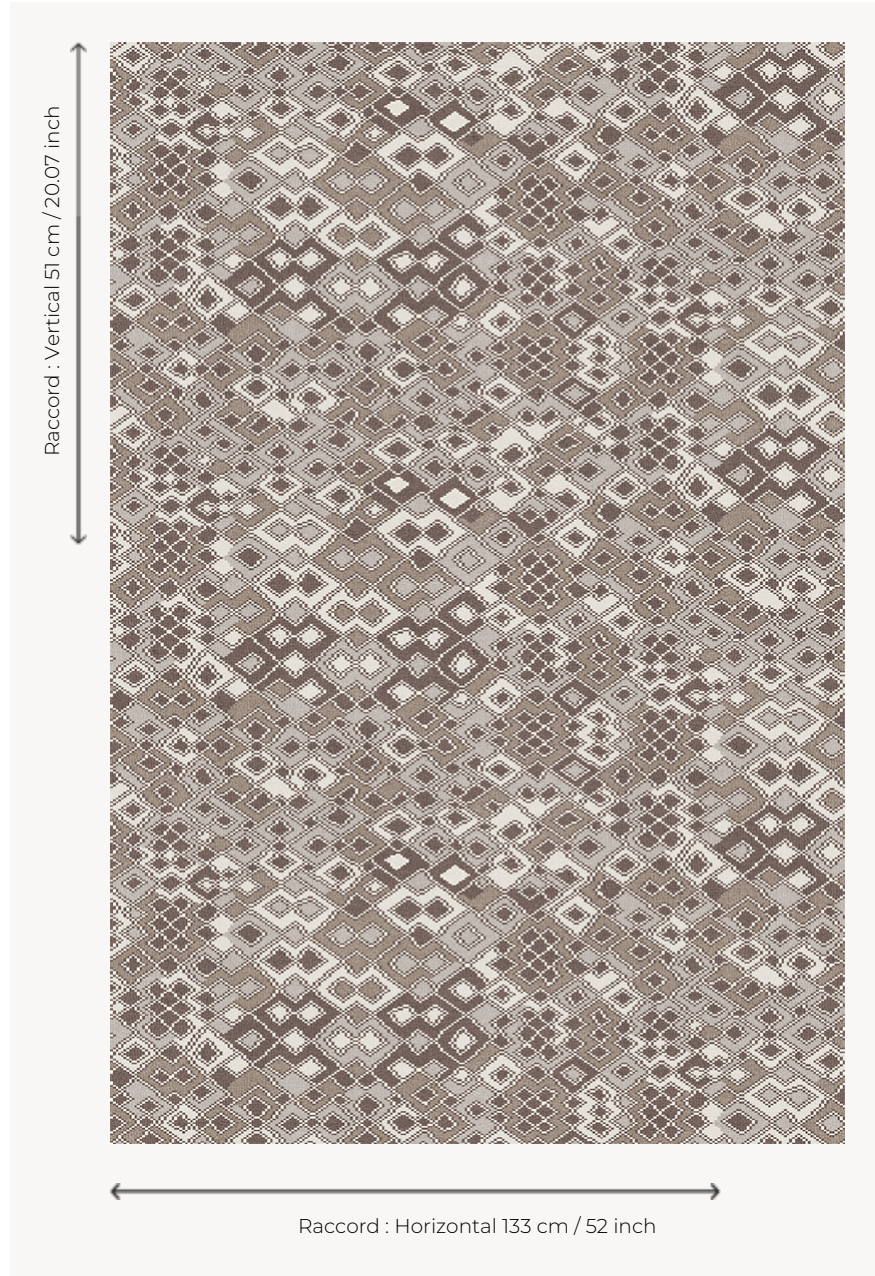


FT492001 KARAKOUM

Developed as a Fast-track Axminster woven carpet, the KARAKOUM design reveals a vibrant pattern inspired by Kasai rafia embroideries, also called Kuba velvet because of thread poms evoking the cut pile of velvet. Developed in 3 colorways, it is ideal for wide widths.

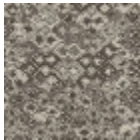
FT492001 - PERLE



Pierre Frey

PERFORMANCE	TRAFIC INTENSE - NON FEU
FAMILY	Carpet
TECHNIQUE	Fast-Track woven Axminster
USE	Intensive traffic Stairs
COMPOSITION	80 % Wool - 20 % Polyamide
DENSITY	7x10
PILE	Cut pile
ASPECT	Mat
REPEAT	H: 133 cm - 52,00 inch V: 51 cm - 20,07 inch Straight repeat
NUMBER OF COLORS	5
PILE HEIGHT	7.40 mm 0.29 inch
TOTAL HEIGHT	10.10 mm 0.39 inch
TOTAL WEIGHT	7.18 oz/ft²
NOTES	Fire retardant Heavy traffic Large width
INFORMATION	Production tolerance +/- 3 to 5% Natural irregularities Natural peeling

3 Colors



FT492001
PERLE



FT492002
OASIS



FT492003
SABLE