

FT492003 KARAKOUM

Developed as a Fast-track Axminster woven carpet, the KARAKOUM design reveals a vibrant pattern inspired by Kasai rafia embroideries, also called Kuba velvet because of thread poms evoking the cut pile of velvet. Developed in 3 colorways, it is ideal for wide widths.

FT492003 - SABLE



Pierre Frey

PERFORMANCE TRAFIC INTENSE - NON FEU

FAMILY Carpet

TECHNIQUE Fast-Track woven Axminster

USE Intensive traffic
Stairs

COMPOSITION 80 % Wool - 20 % Polyamide

DENSITY 7x10

PILE Cut pile

ASPECT Mat

REPEAT H: 133 cm - 52,00 inch
V: 51 cm - 20,07 inch
Straight repeat

NUMBER OF COLORS 5

PILE HEIGHT 7.40 mm
0.29 inch

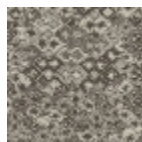
TOTAL HEIGHT 10.10 mm
0.39 inch

TOTAL WEIGHT 7.18 oz/ft²

NOTES Fire retardant
Heavy traffic
Large width

INFORMATION Production tolerance +/- 3 to 5%
Natural irregularities
Natural peeling

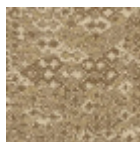
3 Colors



FT492001
PERLE



FT492002
OASIS



FT492003
SABLE