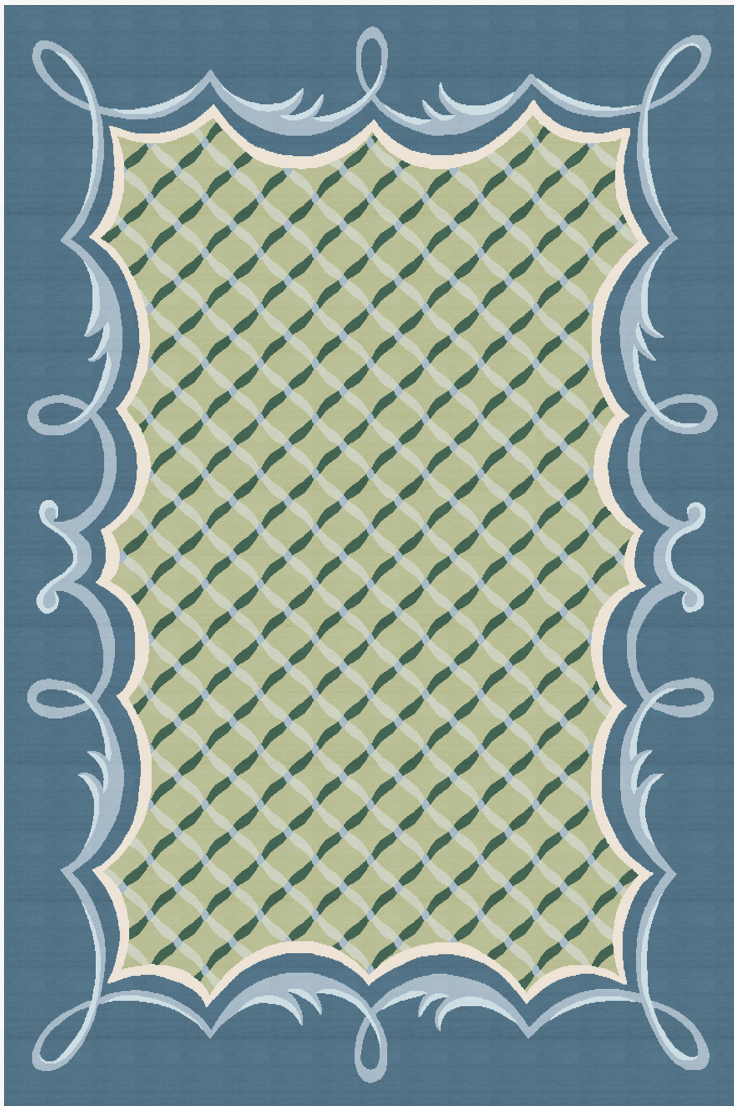


## FT518002 MERCOEUR

Inspired by a gouache carpet design by Engliger dating from the 1930s and preserved in the Pierre Frey archives, MERCEUR draws its essence from the symmetrical elegance and geometric rigor of French formal gardens. Hand-knotted in Nepal, it is adorned with a trellis and stylized acanthus leaves reinterpreted in a contemporary manner. The overall effect evokes a garden, combining architectural rigor with the movement of plants.

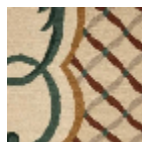
### FT518002 - AZUR



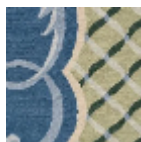
### Pierre Frey

|                         |   |
|-------------------------|---|
| <b>FAMILY</b>           | Rug   |
| <b>TECHNIQUE</b>        | Nepalese hand-knot  |
| <b>USE</b>              | Moderate traffic  |
| <b>COMPOSITION</b>      | 100 % Wool  |
| <b>DENSITY</b>          | 100 knots/sq.inch   |
| <b>PILE</b>             | Cut pile  |
| <b>ASPECT</b>           | Mat   |
| <b>NUMBER OF COLORS</b> | 7   |
| <b>PILE HEIGHT</b>      | 6.00 mm<br>0.24 inch  |
| <b>TOTAL HEIGHT</b>     | 12.00 mm<br>0.47 inch   |
| <b>TOTAL WEIGHT</b>     | 12.12 oz/ft <sup>2</sup>  |
| <b>NOTES</b>            | 100% handmade<br>Craft manufacturing<br>100% natural fiber                    |
| <b>INFORMATION</b>      | Production tolerance +/- 3 to 5%<br>Natural irregularities<br>Natural peeling |

## 2 Colors



FT518001  
AVOINE



FT518002  
AZUR